

CONTENTS

This document discusses connecting a Windows95/98 PC to the VP2020 using a direct Ethernet connection. It also offers a means to test to see if a connection exists.

Direct Ethernet Connection

Using Windows 95-98 and a crossover Ethernet cable:

1. Plug the RJ45 category 5 crossover cable into the VP2020 Printer's Ethernet port and the other end into the computers Ethernet port.
2. Set the IP address (xxx.xxx.xxx.yyy) on the VP2020 Printer.

Ex. 192.168.188.85 (default)

3. Set a static IP on the computer (xxx.xxx.xxx.yyz) so that the last three digits are different. This is important so that the printer and pc can interface correctly. If you use the printer default address of 192.168.188.85 then make the pc anything from 192.168.188.0 to 192.168.188.255.

Ex. 192.168.188.100

- a. Go to the network control panel from the start menu.
- b. Select the TCP/IP protocol for your network adapter and select properties (See Figure 1)

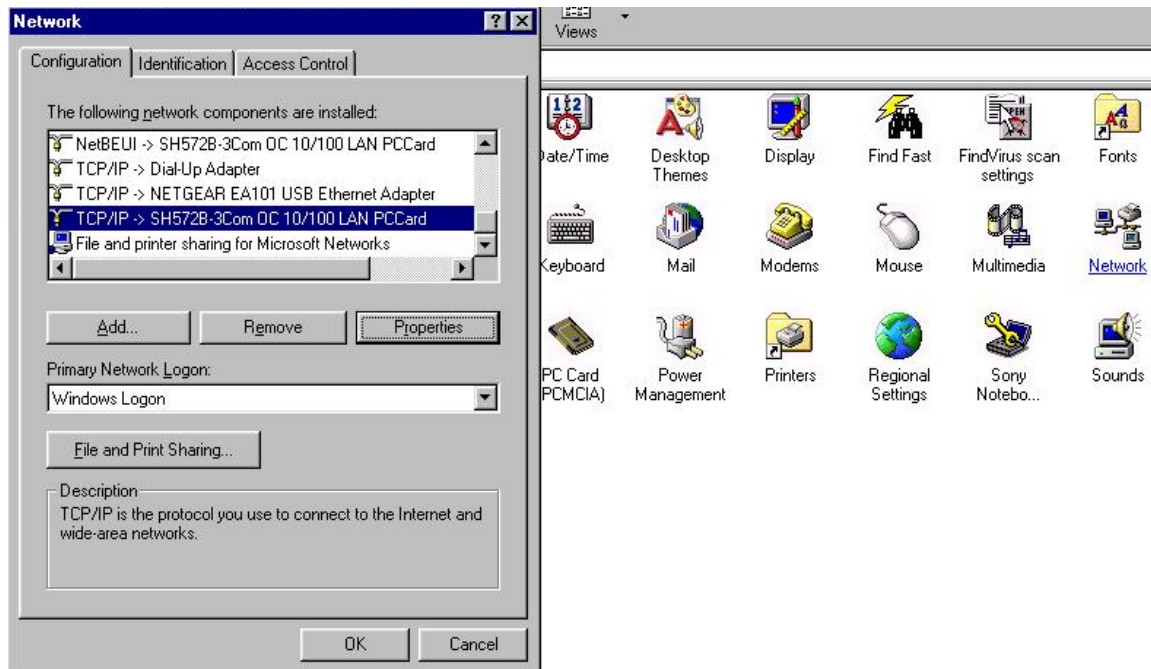


Figure 1

- c. Under the IP Address Tab, enter in the IP Address you would like to use for the PC. Ensure as written above that it is something very similar to the IP Address of the printer. Make sure you set the subnet mask to 255.255.255.0. (Refer to Figure 2) Click OK and OK again to close. Windows may prompt you to restart, and if so go ahead and do that. If when you enter the TCP/IP Properties box, Obtain an IP address automatically is selected, you must choose specify an IP address and enter in that information. If you are normally connected to another network you will have to change back your setting to Obtains an IP address automatically when you want

to reconnect to that network. It may assist you to see your network administrator for more information.

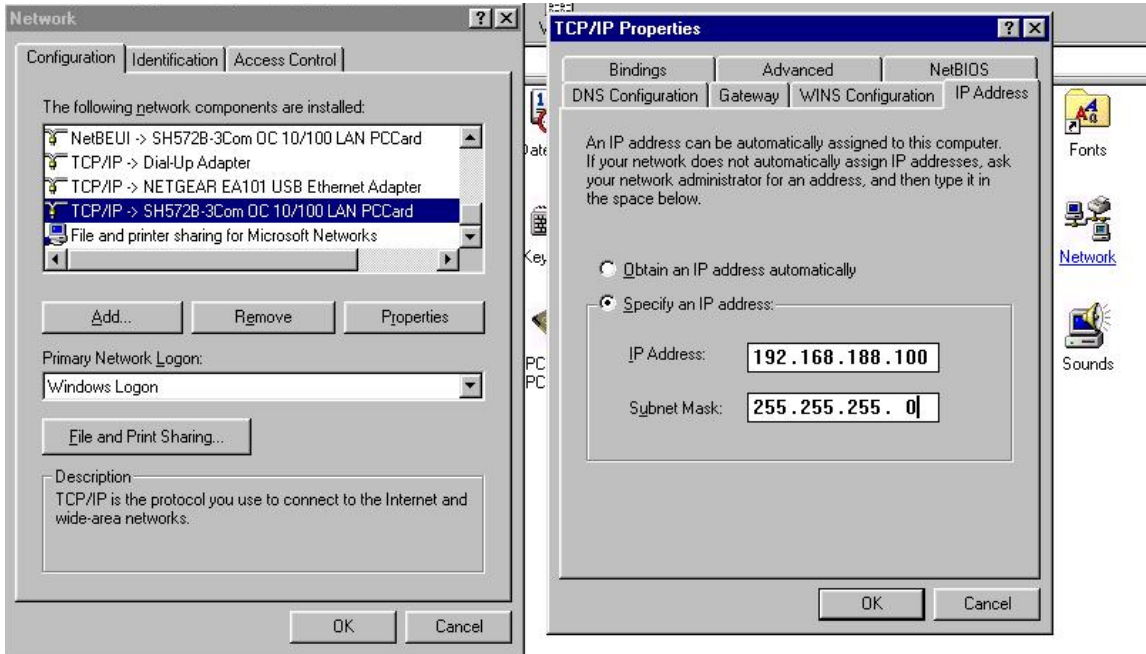


Figure 2

4. Once Windows has restarted the configuration to the VP2020 is complete. To check and make sure that you correctly configured the PC you can do a test in MS-DOS.
5. Go to Start Menu, choose run, and type 'command' (without the '). See Figure 3.

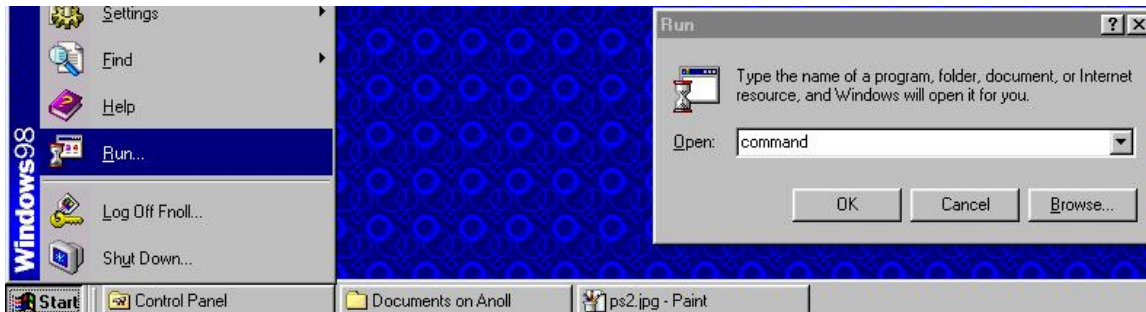


Figure 3

6. Type 'ping 192.168.188.85' (or whatever you set the VP2020's address to in the previous step 2) (without the '). This sends pieces of data to the VP2020 from your PC to ensure there is an established connection. (See Figure 4)

```
C:\Documents and Settings\Arthur>ping 192.168.188.85
Pinging 192.168.188.85 with 32 bytes of data:
```

Figure 4

7. If you entered the settings correctly and a live connection exists, you should receive a message similar to that in Figure 5:

```
C:\Documents and Settings\Arthur>ping 192.168.188.85
Pinging 192.168.188.85 with 32 bytes of data:
Reply from 192.168.188.85: bytes=32 time<1ms TTL=128
Reply from 192.168.188.85: bytes=32 time<1ms TTL=128
Reply from 192.168.188.85: bytes=32 time<1ms TTL=128
Reply from 192.168.188.85: bytes=32 time<1ms TTL=128

Ping statistics for 192.168.188.85:
    Packets: Sent = 4, Received = 4, Lost = 0 (0% loss),
    Approximate round trip times in milli-seconds:
        Minimum = 0ms, Maximum = 0ms, Average = 0ms
```

Figure 5

8. If you receive this message:

```
C:\Documents and Settings\Arthur>ping 192.168.188.85
Pinging 192.168.188.85 with 32 bytes of data:
Request timed out.
Request timed out.
Request timed out.
Request timed out.
```

Figure 6

9. It means that there is no communication between the PC and the VP2020 and you have done something incorrectly. Check to make sure the cable is in fact plugged in and that you have followed the previous steps correctly.