

Driver Installation Procedure for Win 98 Using USB

VP2020

CONTENTS

This document gives a guide to installing the VP2020 driver in Windows98 using USB.

1. Plug the Universal Serial Bus (USB) cable into the VP2020 Printer and the other end into the computers USB connector port. A new window will appear on your screen momentarily with the following caption:

Found New Hardware Device.
VIPColor VP2020 Printer
Windows is searching for device driver.

2. The window will close, and the printer driver installation window will open. Click next.

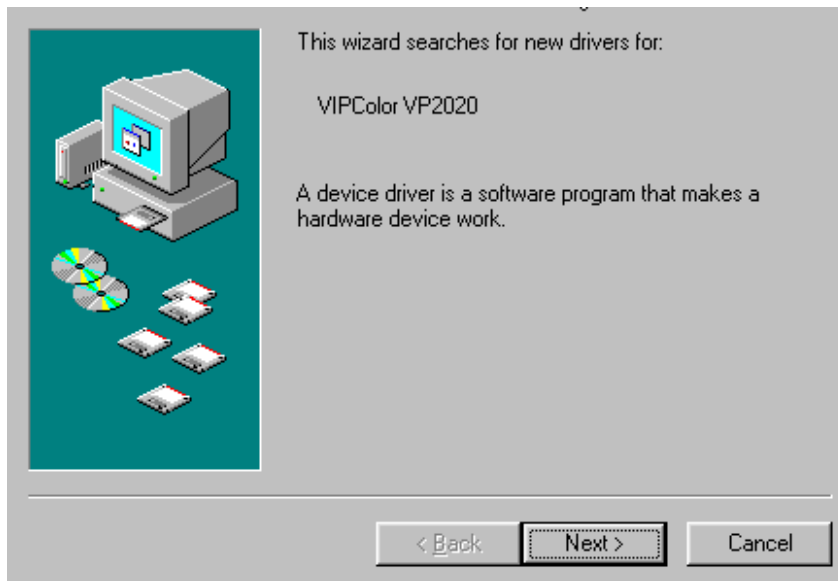


Fig 2

3. The user will then be prompted to enter a response. Choose **search for the best driver for your device**. Click next.

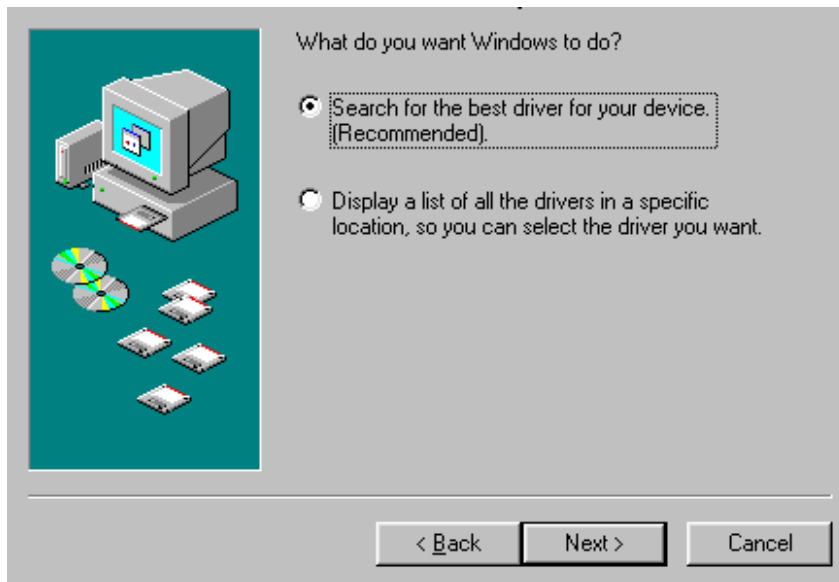


Fig 3

4. The user will then be prompted to enter the location where the driver files are located. Click browse, and select the appropriate root drive on your computer that corresponds to the location where the VIPColor Special Edition Driver by Seagull Scientific cd is located. Select the folder called drivers, and then click next.

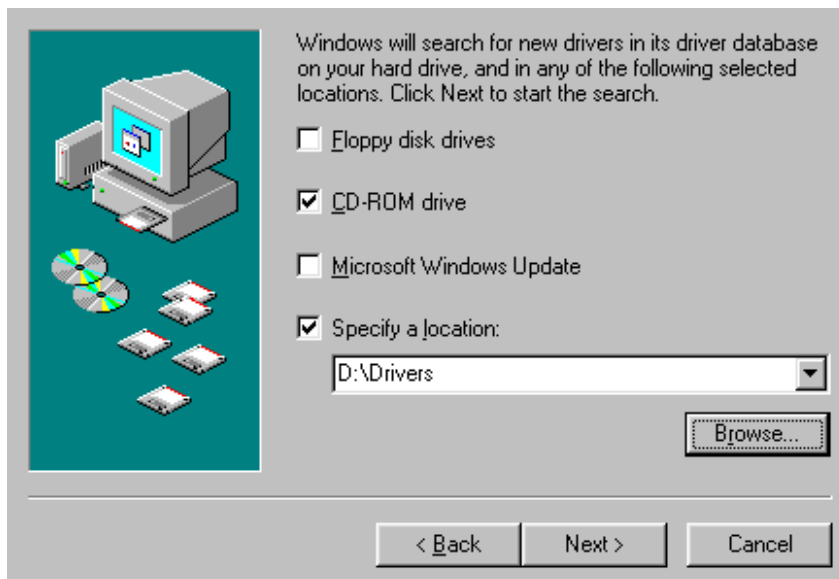


Fig 4

- Windows will now search for a driver file to support USB Printing. The location of the driver file is shown, ie... D:\drivers\usbprint.inf. Click next. It may also be c:\seagull or just d:\usbprint.inf.

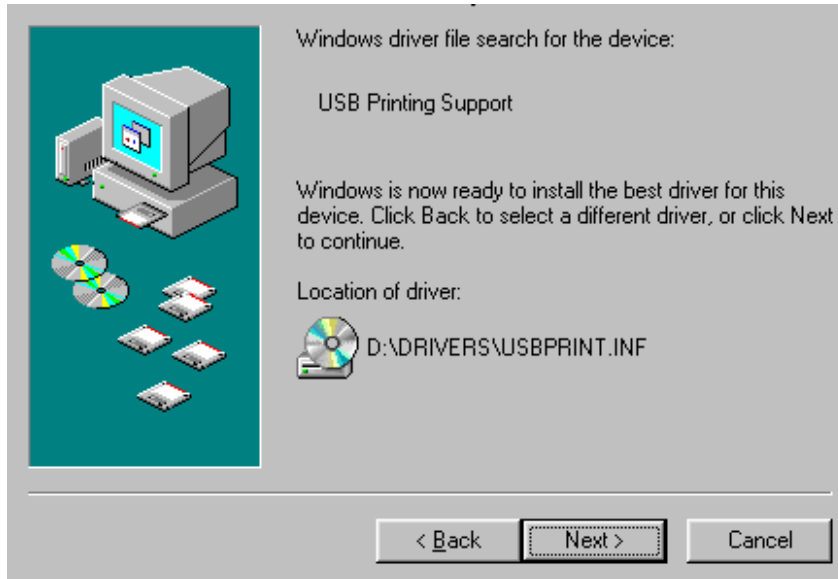


Fig 5

- Windows will begin loading the driver files. When that has been completed the following window will appear to inform the user. Click finish.

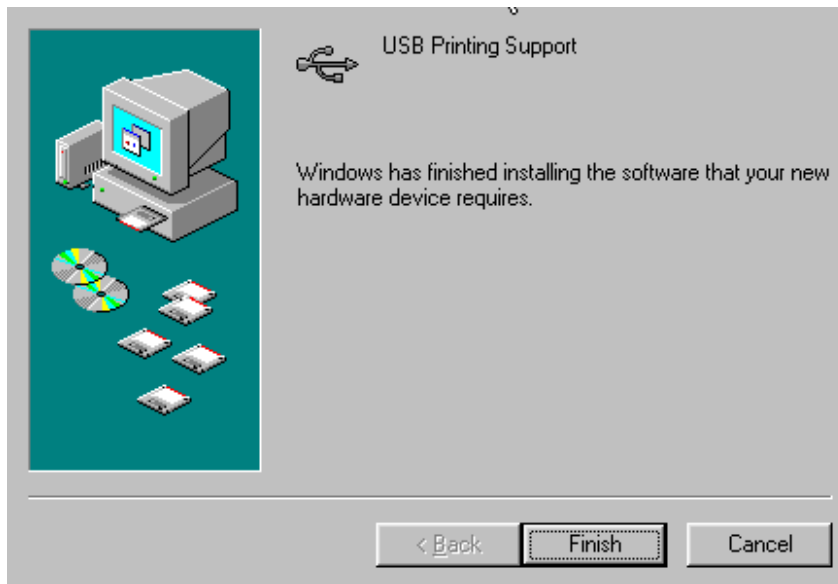


Fig 6

The VIPColor VP2020 driver is now installed.

7. To verify installation:

Left click on start, scroll up to Settings, and select Control Panel.

In the control panel window, double click on printers.

In the printer's window, right click the VIPColor VP2020 printer icon and select properties.

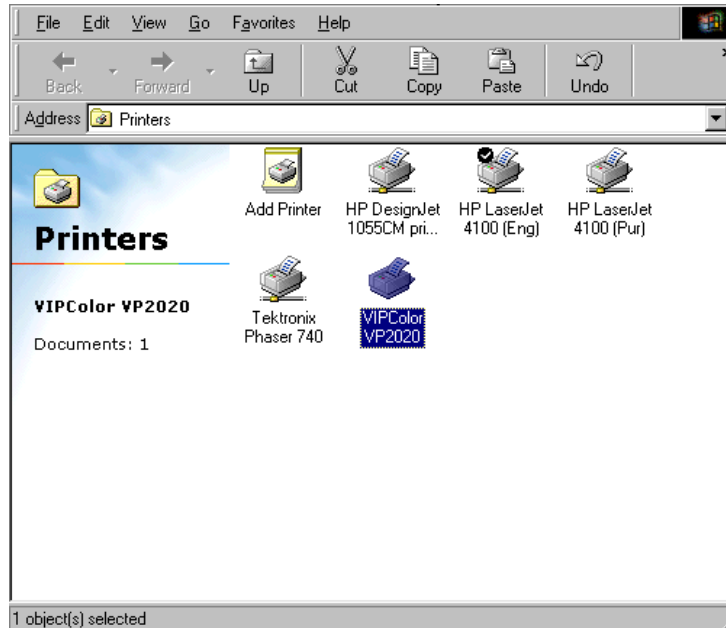


Fig 7

8. The VIPColor VP2020 properties window will launch. Select the Details tab.

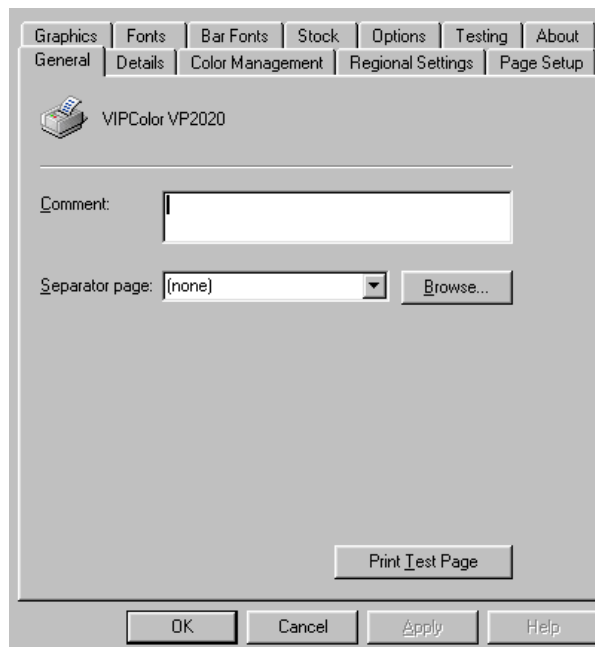


Fig 8

9. In the Details tab. Under the heading, **print to the following port.** Verify that, USB001 (virtual printer port for USB) is selected. Click apply, and then select the general tab.

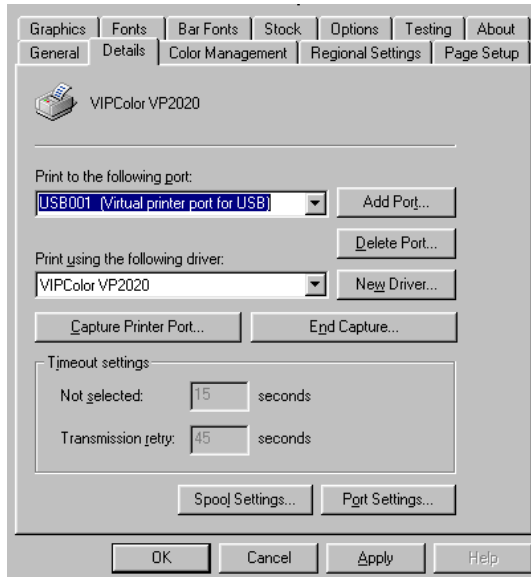


Fig 9

10. In the General tab, click print test page. The test page will be a label that has the word **TEST** printed on it. Click ok.

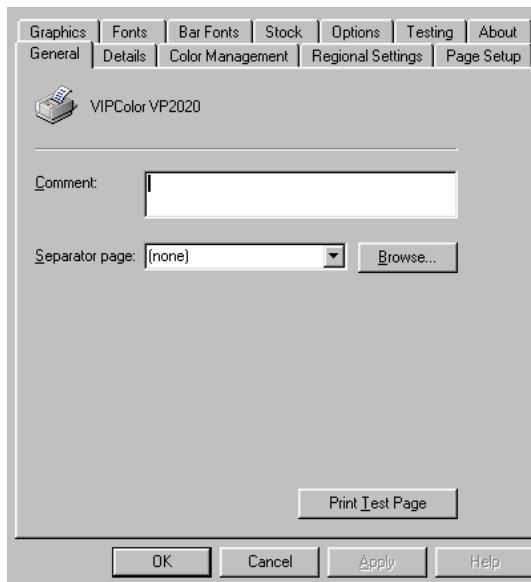


Fig 10