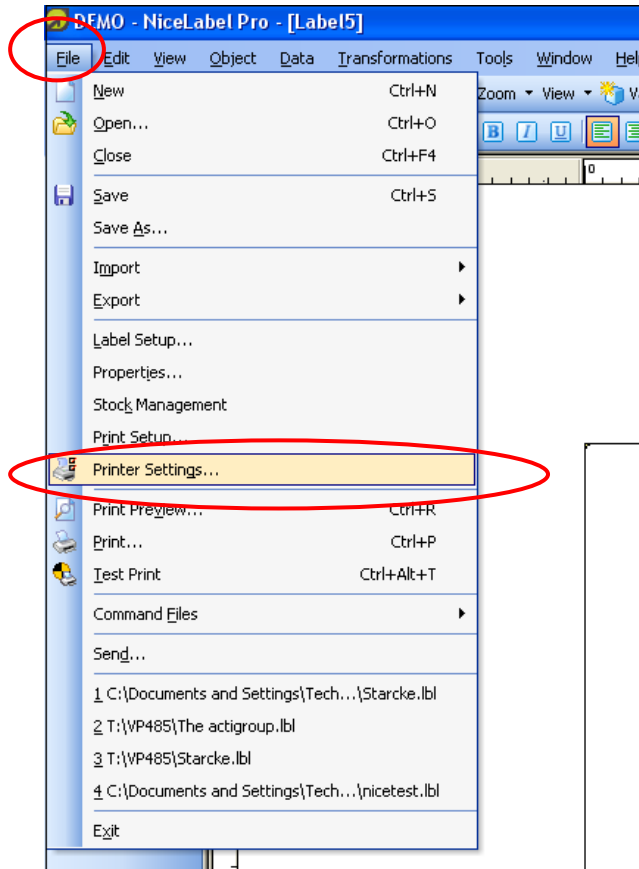


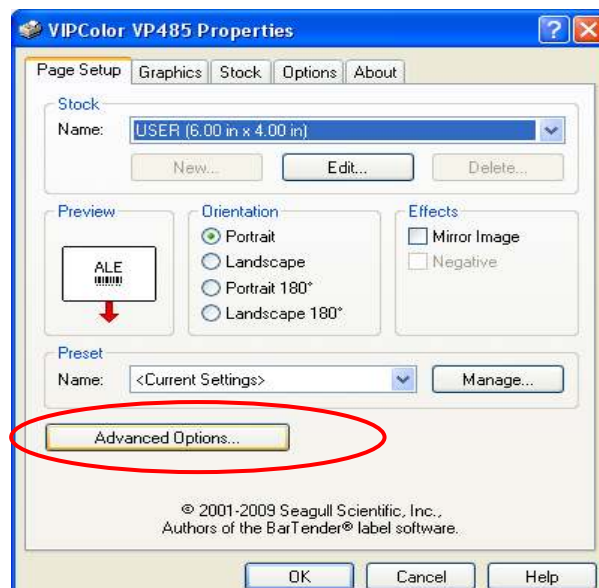
## Optimizing Your Printing Speed on the VP485 Using Nicelabel Software Rev 1.1

The follow steps will assist users in reducing time between labels, optimizing time to print using NiceLabel Software. If you print variable information printing then you will experience a pause between labels as the printer receives the job one label at a time.

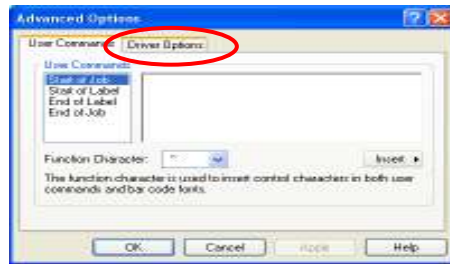
Step 1: Select “Printer Settings” in the “File” menu.



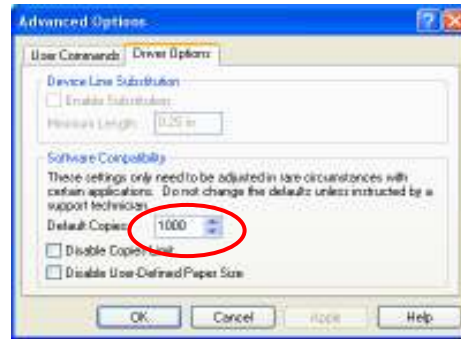
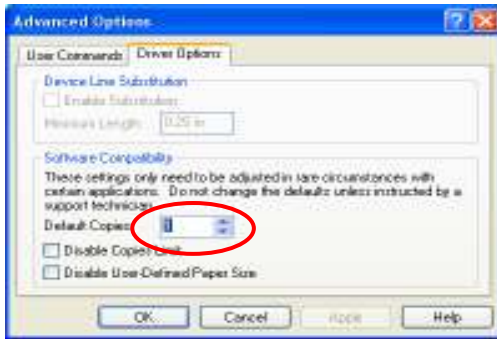
Step 2: Select “Advanced Options” in the VIPColor VP485 Properties Window



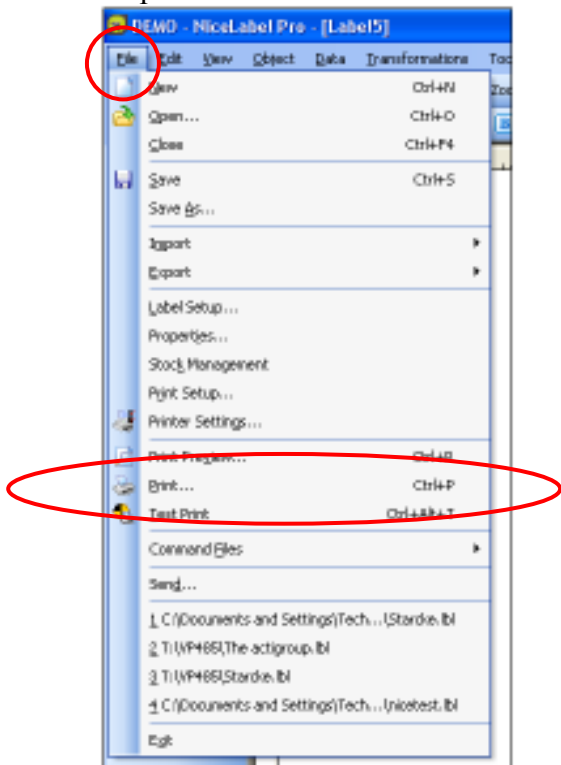
Step 3: Select “Driver Options” in the Advanced Options Window



Step 4: Enter number of labels to be printed in default copies and click okay. This will become the only location you will change the quantity of labels being printed.



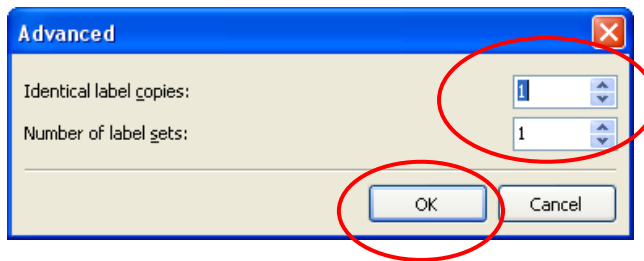
Step 5: Select “Print” in the “File” menu.



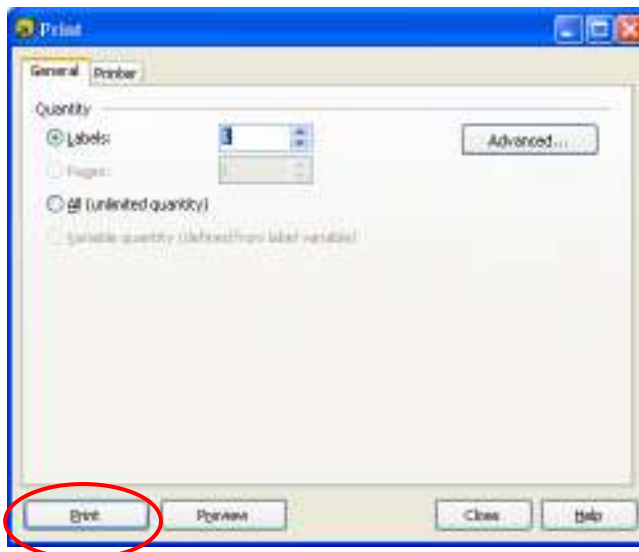
Step 6: Select “Labels: 1” and Click “Advanced”



Step 7: Ensure the values in Identical Copies and Number of labels sets equal 1. Click “OK”



Step 8: Click Print



Great! Now you can save time and money while you print with the VP485 Inkjet Printer.