

Driver Installation Procedure for Win XP

VP2020

CONTENTS

This document gives the driver installation procedure for the VP2020 in Windows XP.

VIPColor Technologies USA, Inc.

© 2003 VIPColor Technologies USA, Inc.

1. Installing the VIPColor VP2020 driver from the installation CD.

- 1.1 Insert the VIPColor UltraLite CD by Seagull Scientific into the cd-rom drive on your Computer. The Bar Tender Set-up Manager Window will appear on your screen automatically. Select Seagull Printer Drivers.



Fig 1

- 1.2 In the Seagull Printer Drivers field, select the install printer driver option from under the software installation menu. This will automatically launch the add printer wizard.

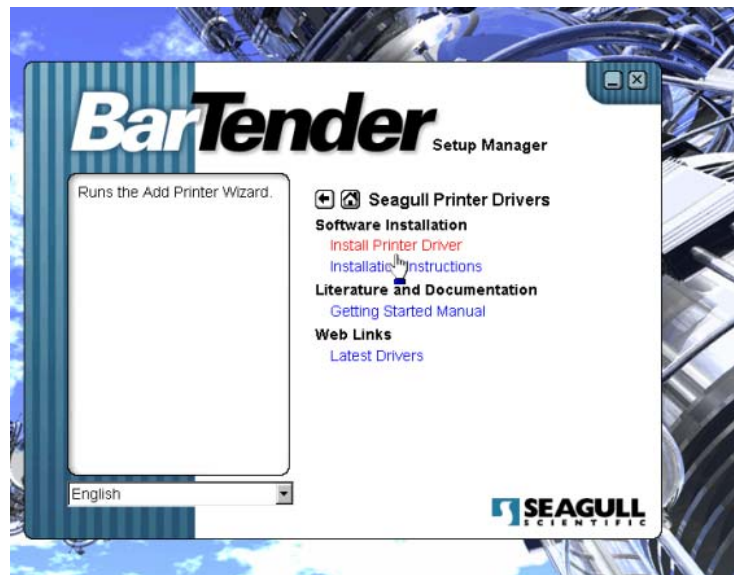


Fig 2

Driver Installation Procedure for Win XP

1.3 In the add printer wizard window, click next to continue.

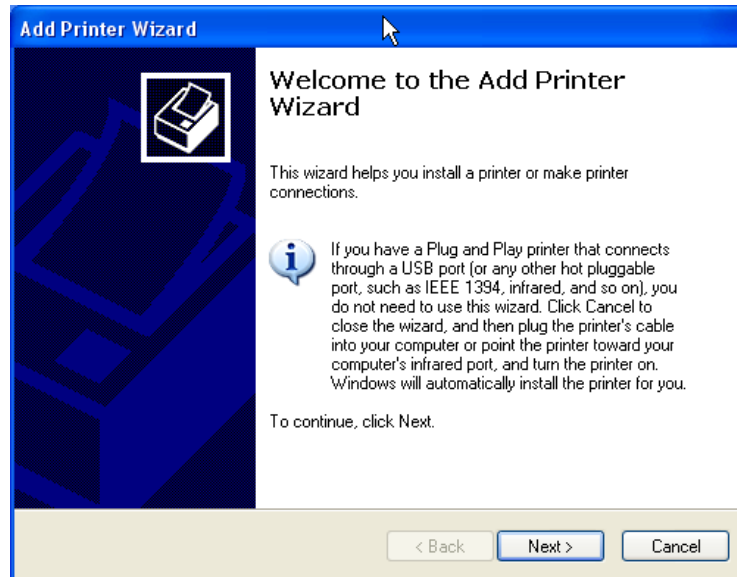


Fig 3

1.4 Select the local printer option, and de-select the option to automatically detect and install a plug and play printer. Click next to continue.

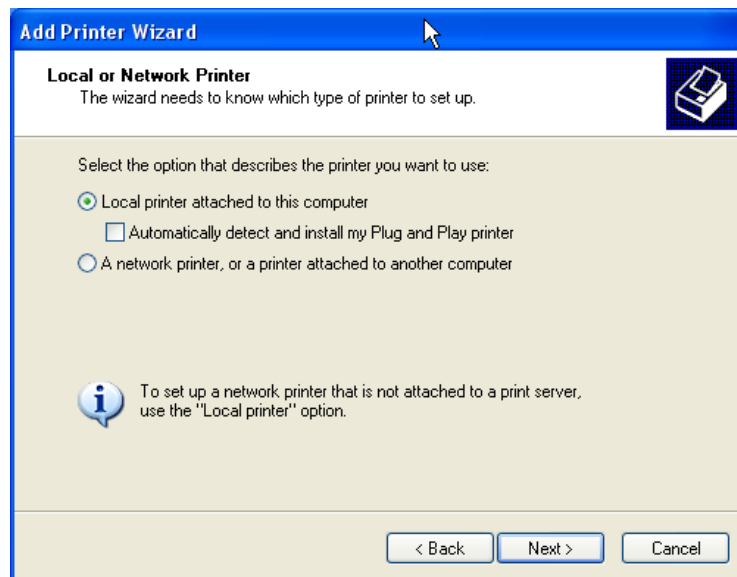


Fig 4

- 1.5 Select "Create a new port" and then choose "Standard TCP/IP Port" from the available port types in the drop down menu. Click next to continue.

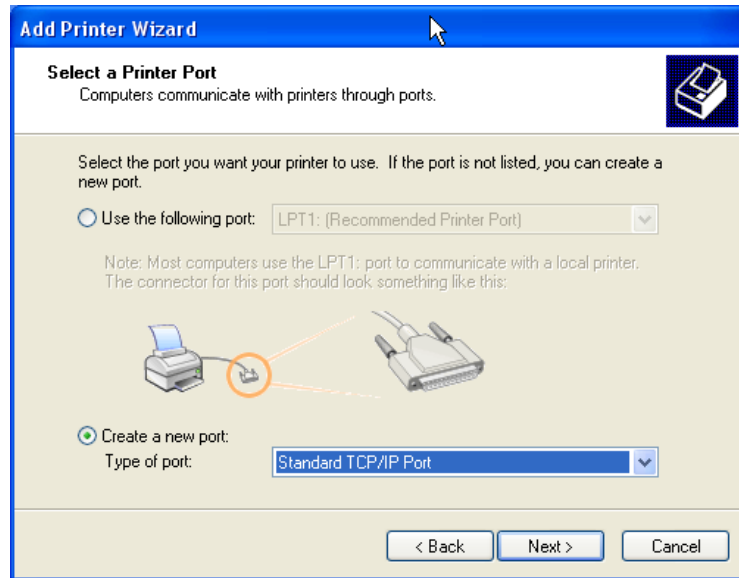


Fig 5

- 1.6 The add Standard TCP/IP printer port wizard will launch. Click next to continue.

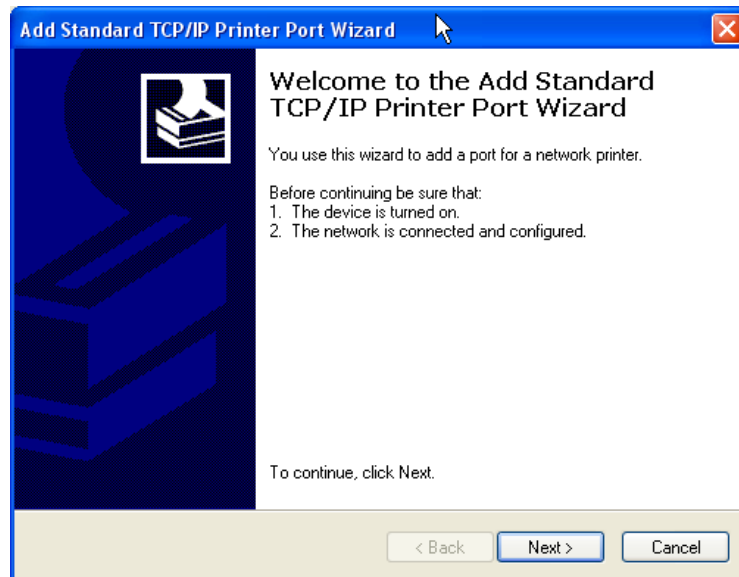


Fig 6

- 1.7 The port wizard will prompt you for the printer IP Address and Port Name. Enter the printer's default IP address - 192.168.188.85. The port name will be automatically entered. Click next to continue.

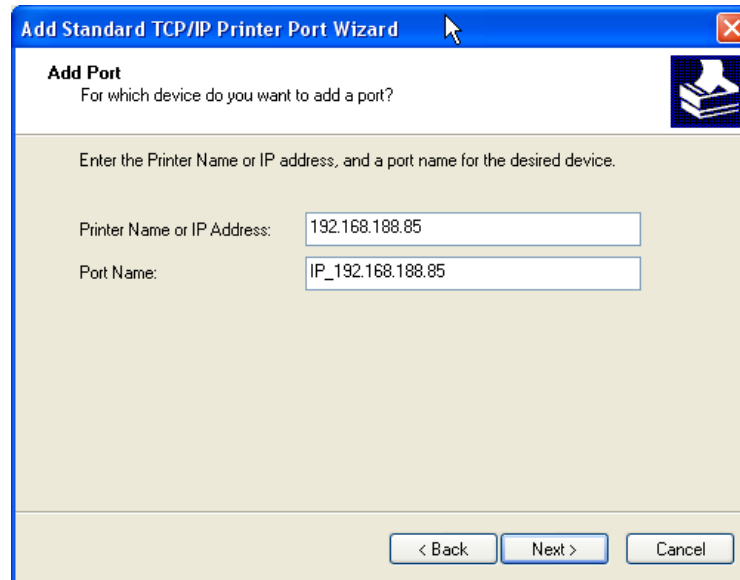


Fig 7

- 1.8 The printer port wizard will then prompt you for the type of device. Select "Custom". Click next to continue.

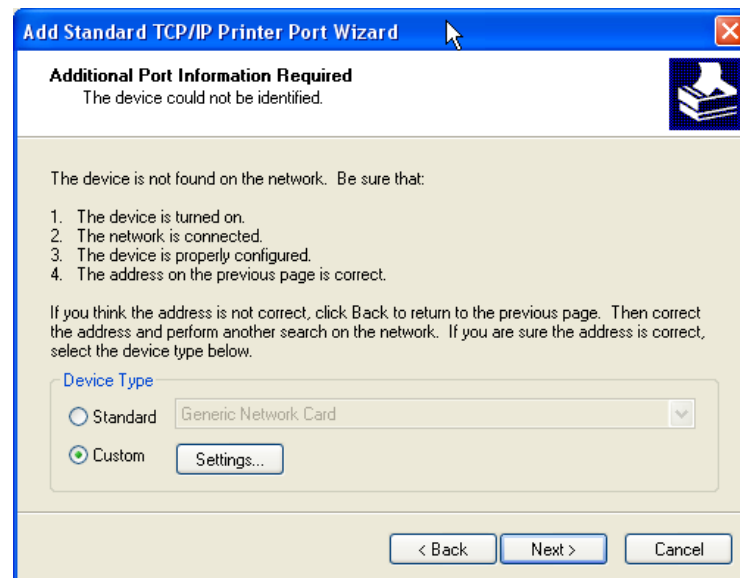


Fig 8

- 1.9 The Printer port wizard displays the settings for the TCP/IP port that you created. Click finish to continue.

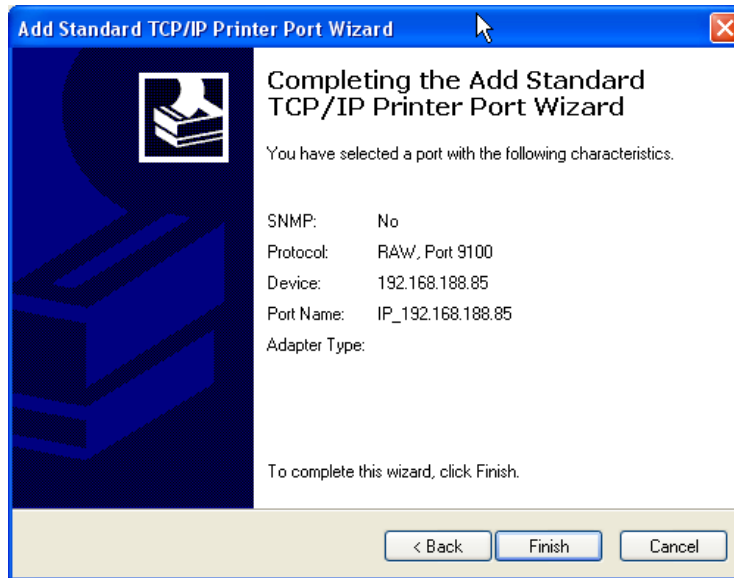


Fig 9

- 1.10 The add printer wizard then prompts you for the manufacturer and model number of the printer that will be installed. Click have disk.

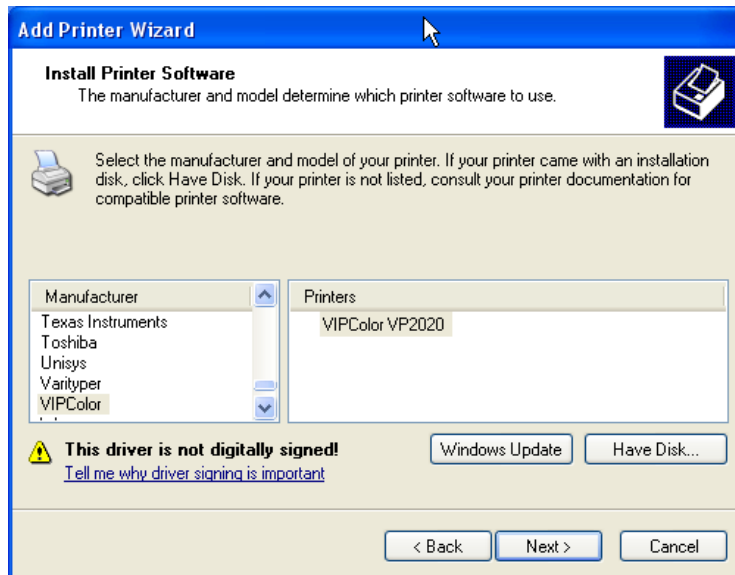


Fig 10

- 1.11 The printer wizard will then prompt you to enter the location where the printer driver files are located. Select the appropriate root drive on your computer that corresponds to the location where the VIPColor UltraLite by Seagull Scientific CD is located. Then select the VIPColor file and click open.

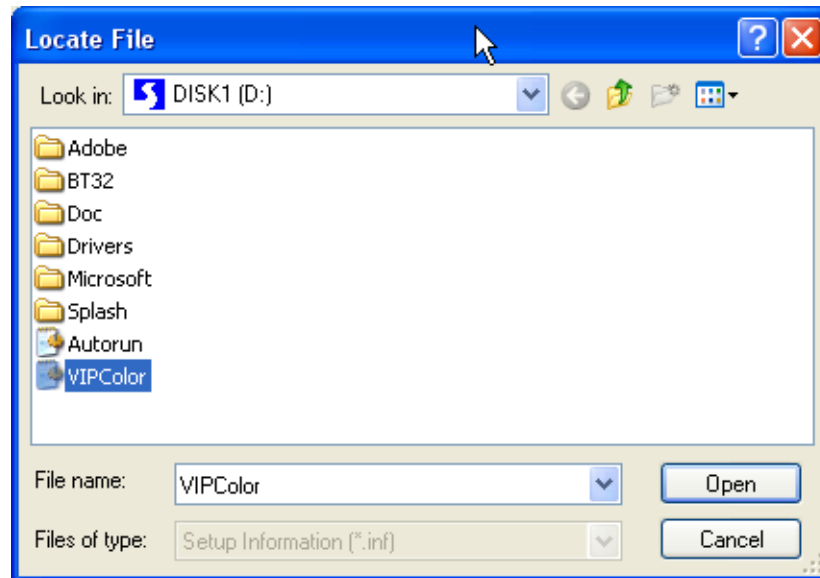


Fig 11

- 1.12 The Location where the files will be copied from is displayed. Click ok to continue.

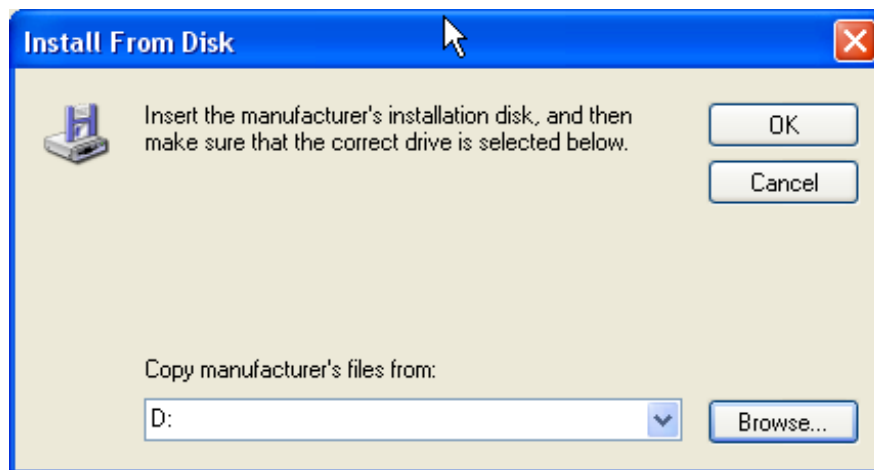


Fig 12

- 1.13 In the Add printer wizard window, The VIPColor VP2020 appears under the printer's caption. Click next to continue.

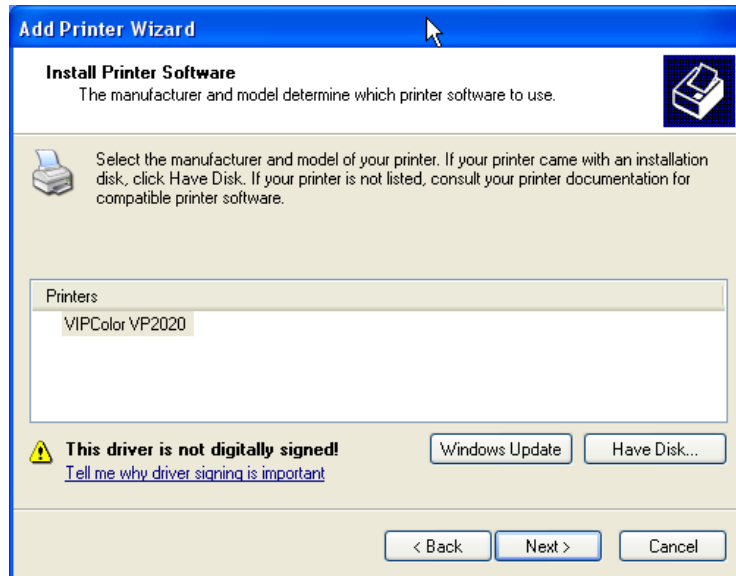


Fig 13

- 1.14 You will then be asked whether or not you would like to keep the existing driver. Select replace existing driver, and click next to continue.

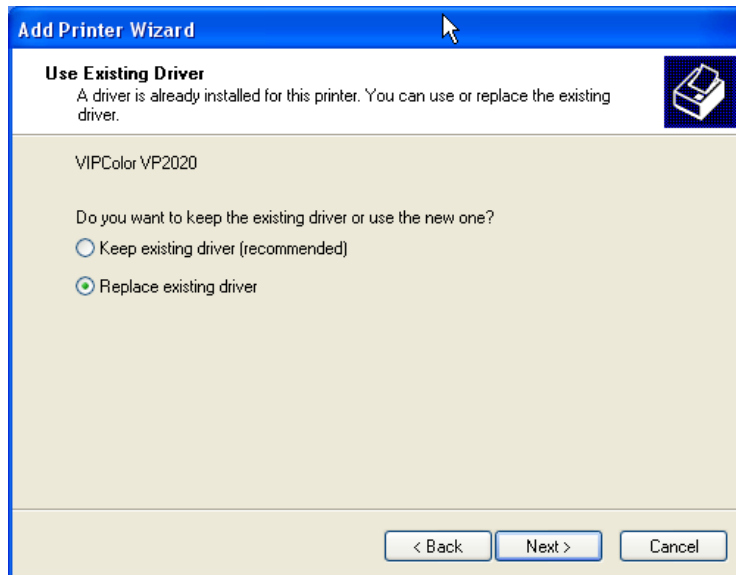


Fig 14

- 1.15 The user will be prompted to enter the printer's name. This should have defaulted to VIPColor VP2020. The operator must then decide whether or not to setup the VIPColor VP2020 printer as their default printer. Click next to continue.

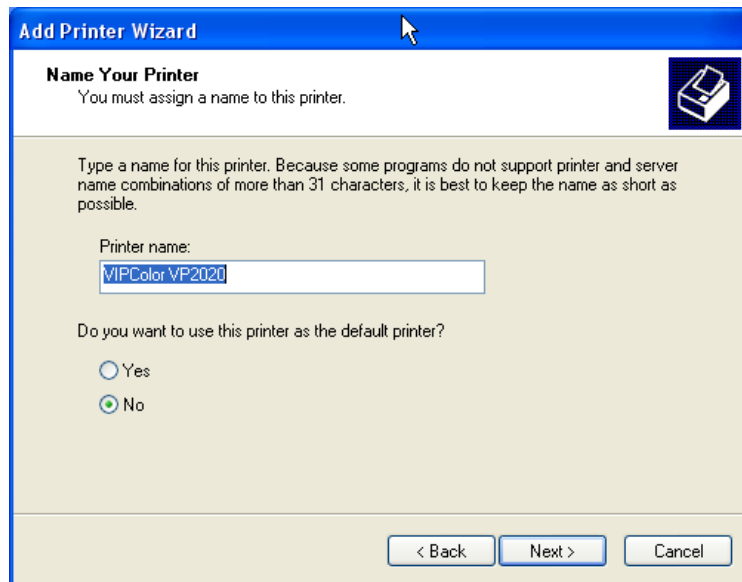


Fig 15

- 1.16 The user will then be asked whether or not they would like to share this printer with other users. Select do not share this printer. Click next to continue.

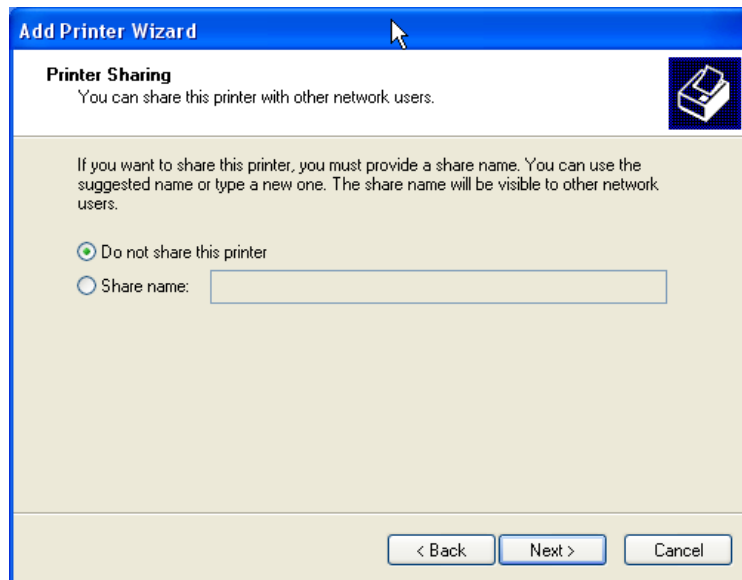


Fig 16

- 1.17 The user will then be asked whether or not they would like to make a test print. Select no, and click next to continue.

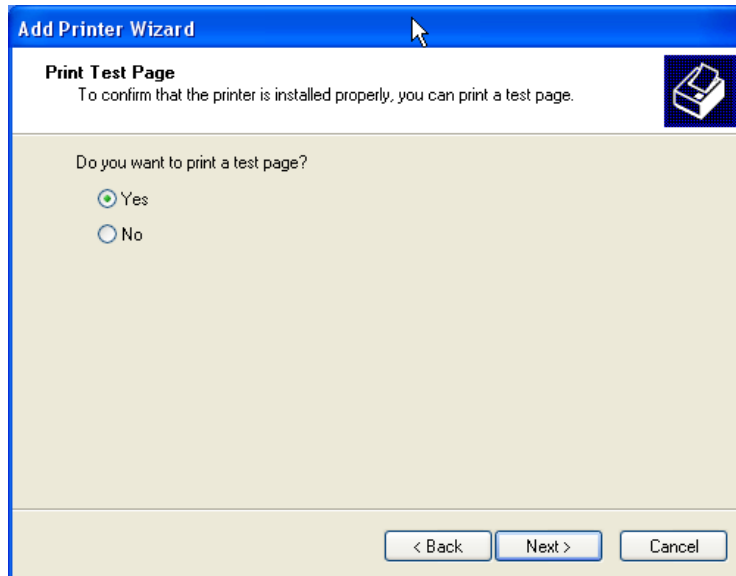


Fig 17

- 1.18 The printer wizard is now complete. In the window, you will see all of the selections that have been made for the VP2020 driver that will be added to your computer. Click finish.

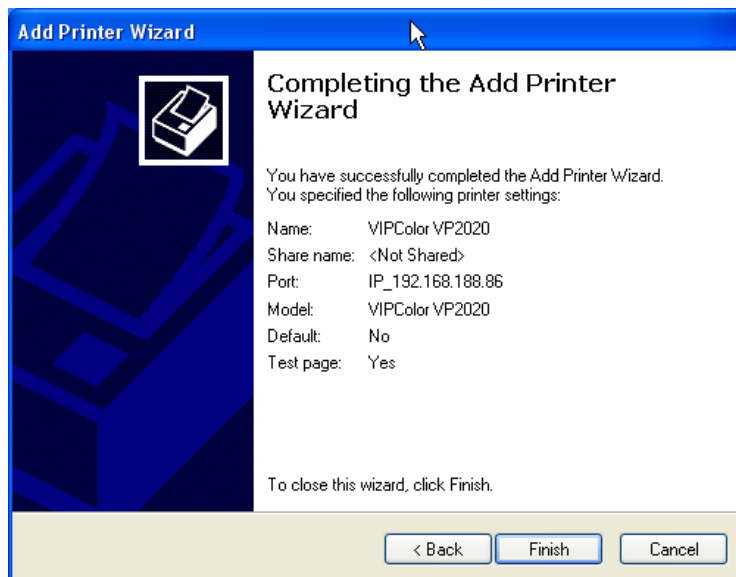


Fig 18

- 1.19 The next screen is informing you of the fact that our driver has not been registered with Microsoft. However, it is fully functional with the Windows operating system. Click continue anyway.



Fig 19

- 1.20 The program will begin loading the driver files to your computer. When that is completed the printer wizard program closes and you are returned to the Bartender Setup Manager Screen. Close the screen by clicking the "X" icon in the top right hand corner. The VP2020 is now successfully loaded as an available printer on your computer. The VP2020 driver installation process is complete.