

# Driver Installation Procedure for Win 98/ME/NT4.0

**VP2020**

## CONTENTS

This document gives the directions for installing the VIPColor VP2020 printer in Windows 98, Windows ME, and Windows NT4.0.

1. Installing the VIPColor VP2020 Driver from the Installation CD.

- 1.1 Insert the VIPColor UltraLite CD by Seagull Scientific into the cd-rom drive on your Computer. The Bar Tender Set-up Manager Window will appear on your screen automatically. Select Seagull Printer Drivers.

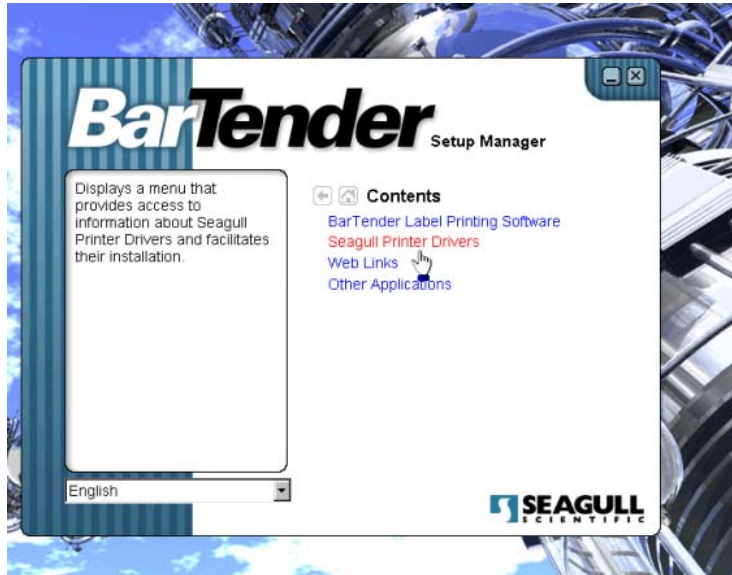


Fig 1

- 1.2 In the Seagull Printer Drivers field, select the install printer driver option from under the software installation menu. This will automatically launch the add printer wizard.

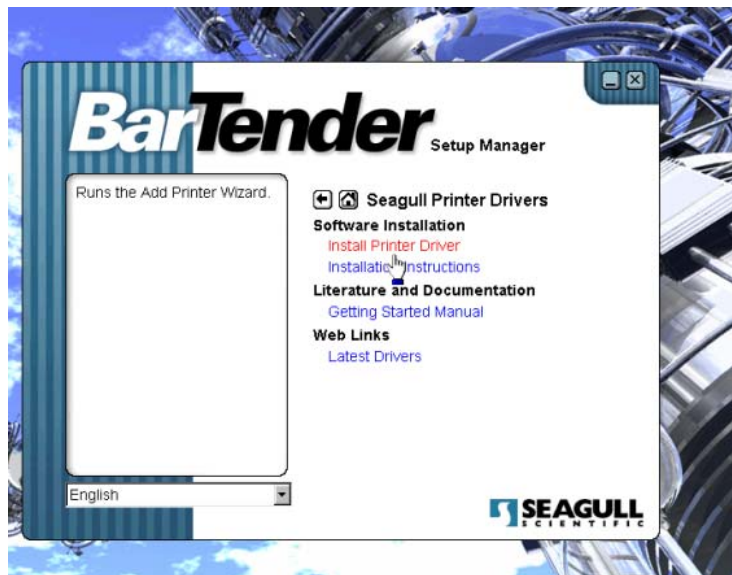


Fig 2

1.3 In the add printer wizard window, click next to continue.

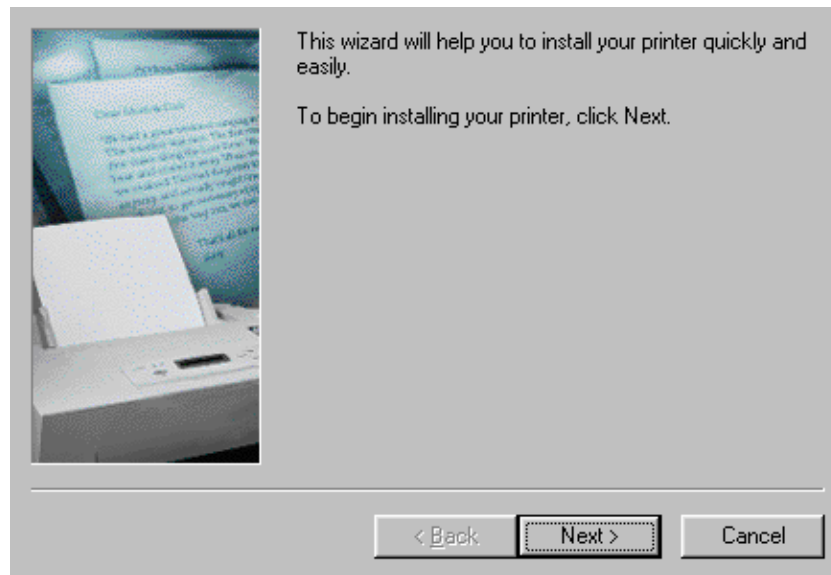


Fig 3

1.4 Select the local printer option. Click next to continue.

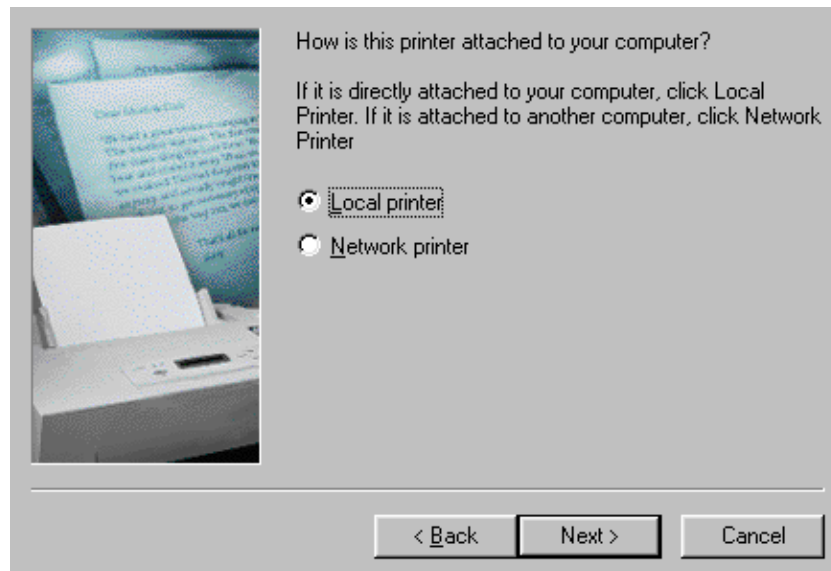


Fig 4

- 1.5 The add printer wizard then prompts you for the manufacturer and model number of the printer that will be installed. Click have disk.

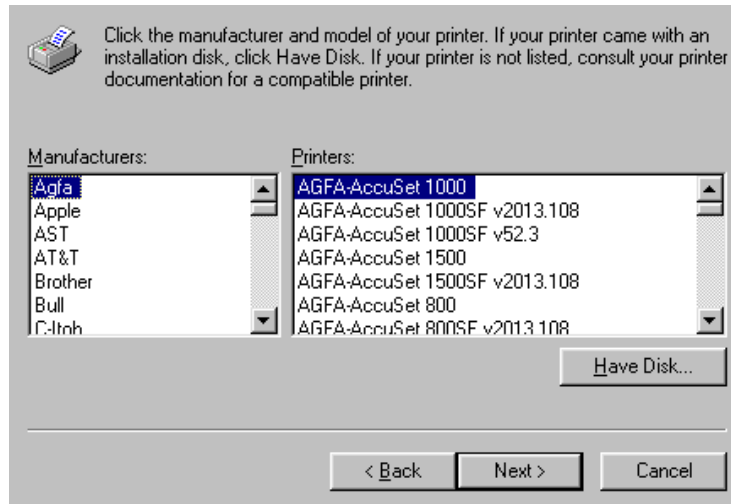


Fig 5

- 1.6 The printer wizard will then prompt you to enter the location where the printer driver files are located. Click browse, and then select the appropriate root drive on your computer that corresponds to the location where the VIPColor UltraLite CD by Seagull Scientific is located.

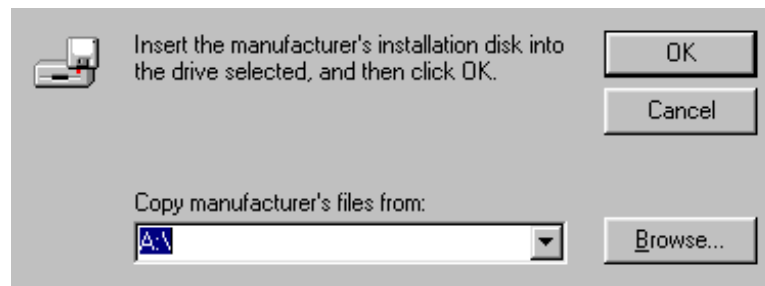


Fig 6

- 1.7 Select the VIPColor file and click ok.

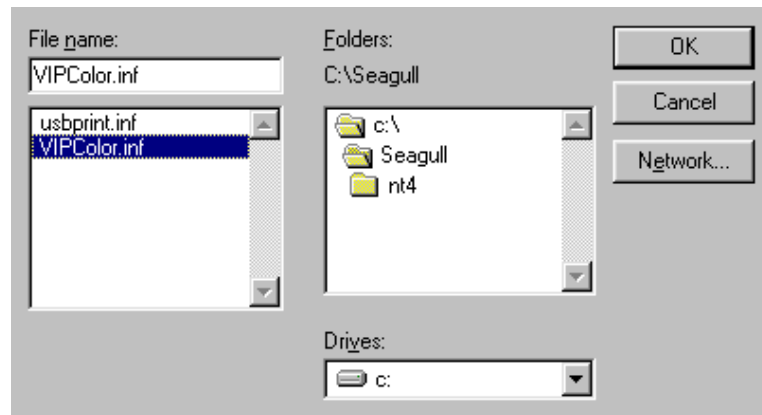


Fig 7

- 1.8 The Location where the files will be copied from is displayed. Click ok to continue.

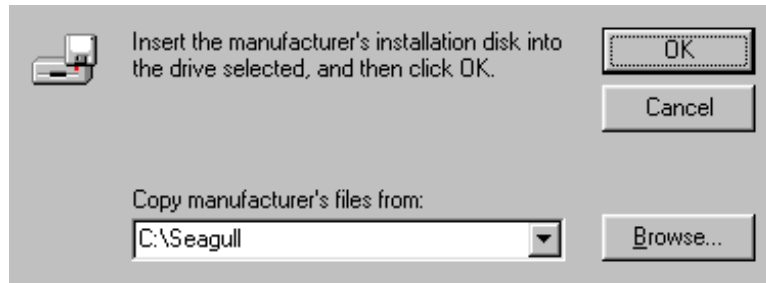


Fig 8

- 1.9 In the Add printer wizard window, The VIPColor VP2020 appears under the printer's caption. Click next to continue.

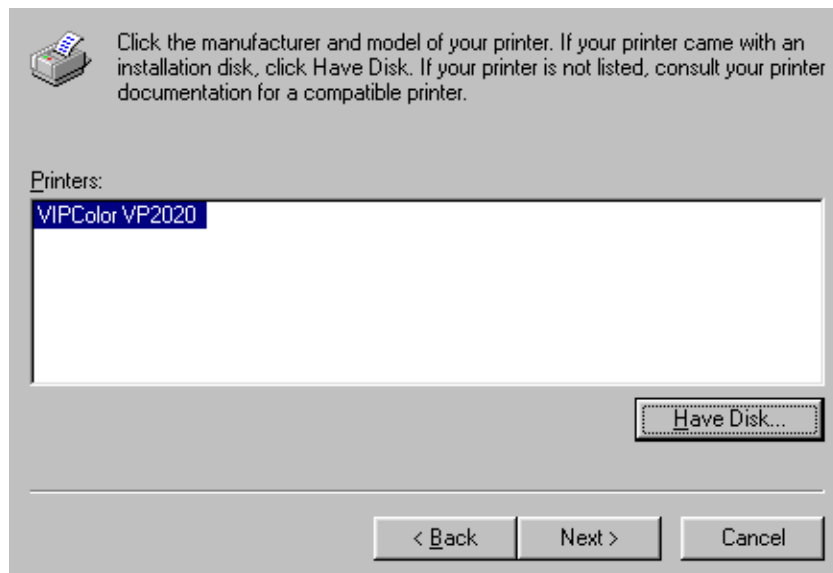


Fig 9

- 1.10 The user will then be asked whether or not they would like to keep the existing driver. Select replace existing driver, and click next.

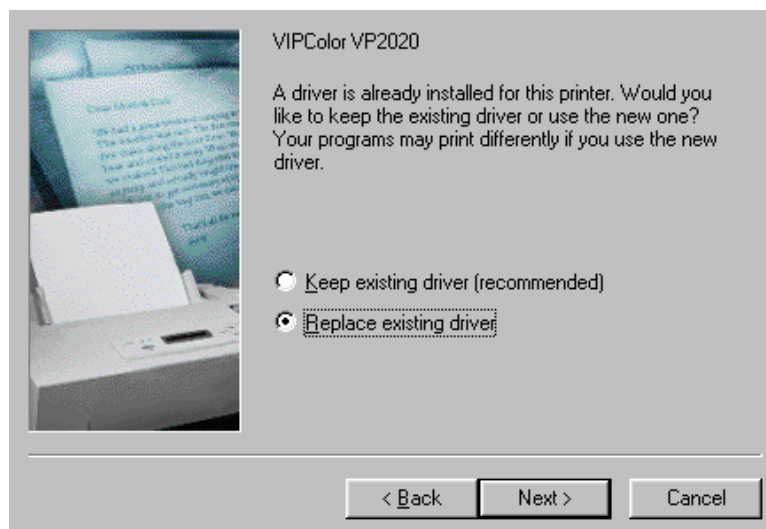


Fig 10

- 1.11 The program will begin loading the driver files to your computer. When that is completed, the user will be asked to select the port that the printer will be attached too. **Note: Select LPT1 and click next to continue.**

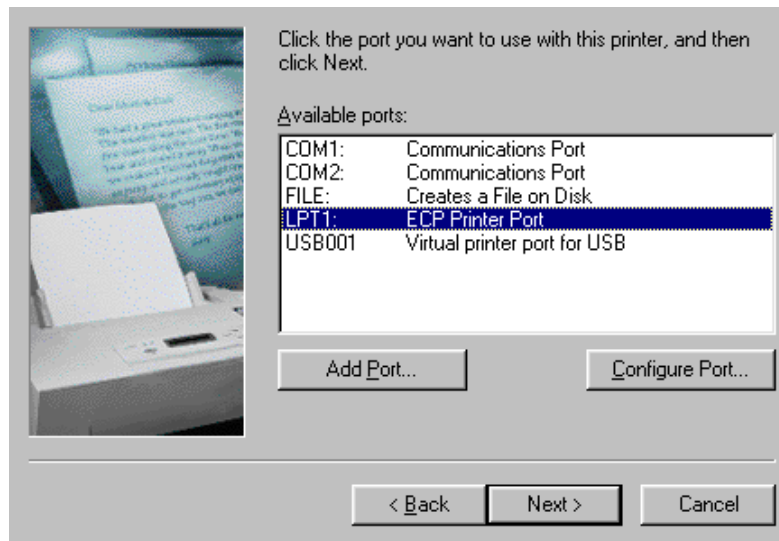


Fig 11

- 1.12 The user will be prompted to enter the printer's name. This should have defaulted to VIPColor VP2020. The operator must then decide whether or not to set-up the VIPColor VP2020 printer as their default printer. Click Finish.

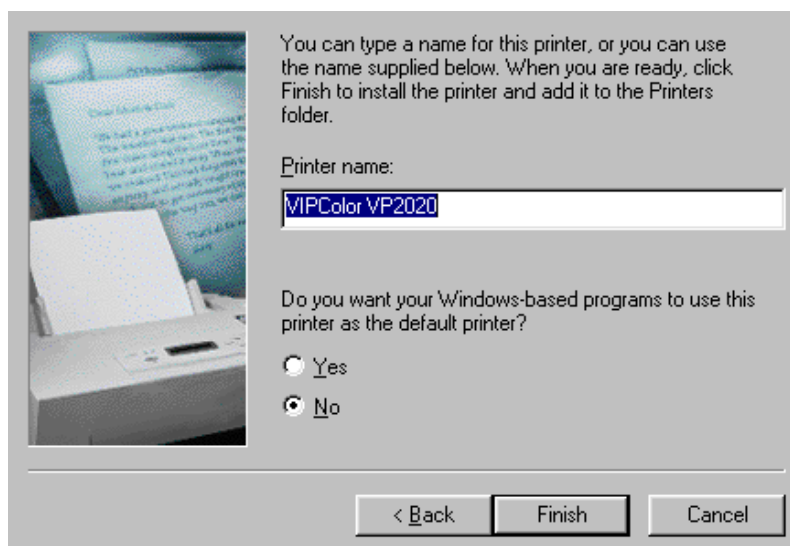


Fig 12

- 1.13 The printer wizard program closes and you are returned to the Bartender Setup Manager Screen. Close the screen by clicking the "X" icon in the top right hand corner. The VP2020 is now successfully loaded as an available printer on your computer. **However, in order to print using the VP2020 the user must create a TCP/IP port and attach the VP2020 to it.**

## 2.0 To add a TCP/IP port to the list of available ports for the VP2020 printer.

- 2.1 Select start, select control panel, select printers. Right click on the VIPColor VP2020 icon and select properties.

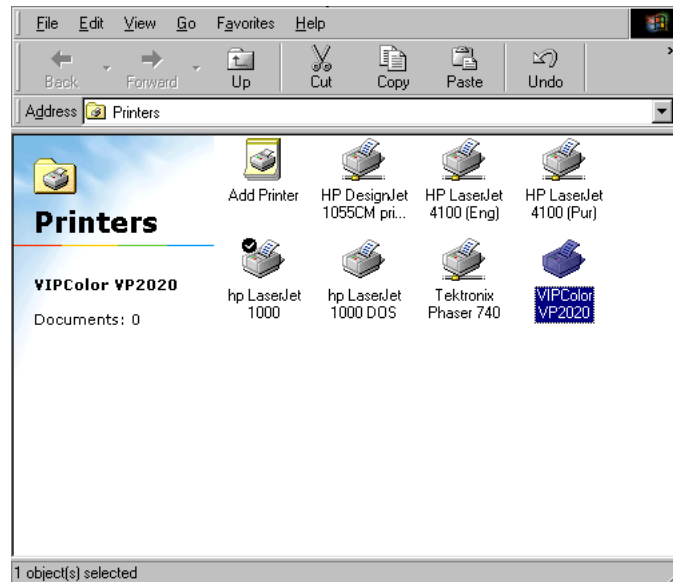


Fig 13

- 2.2 In the VP2020 properties window, select the details tab.

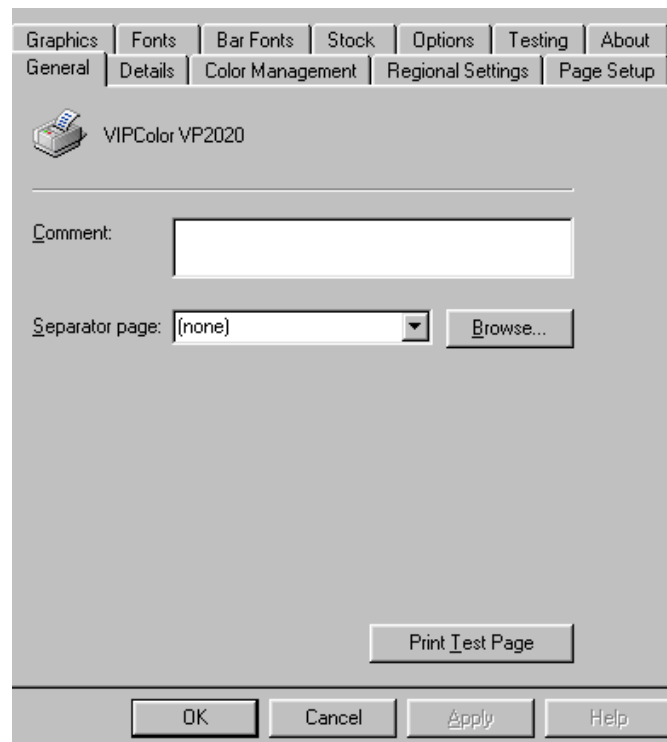


Fig 14

2.3 In the VP2020 properties/details window, select add port.

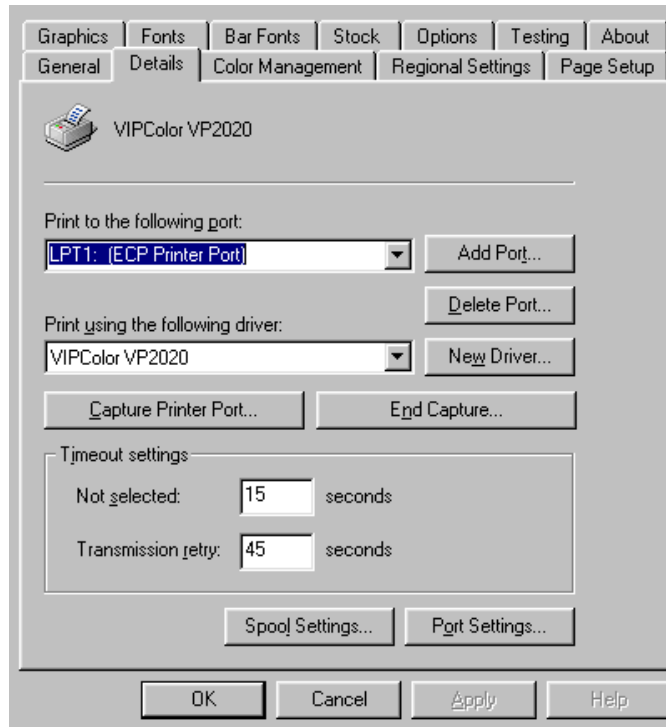


Fig 15

2.4 The user must select the type of port they want to create. **Select other, and then choose Seagull Scientific Port** from the available port types in the menu. Click ok to continue.

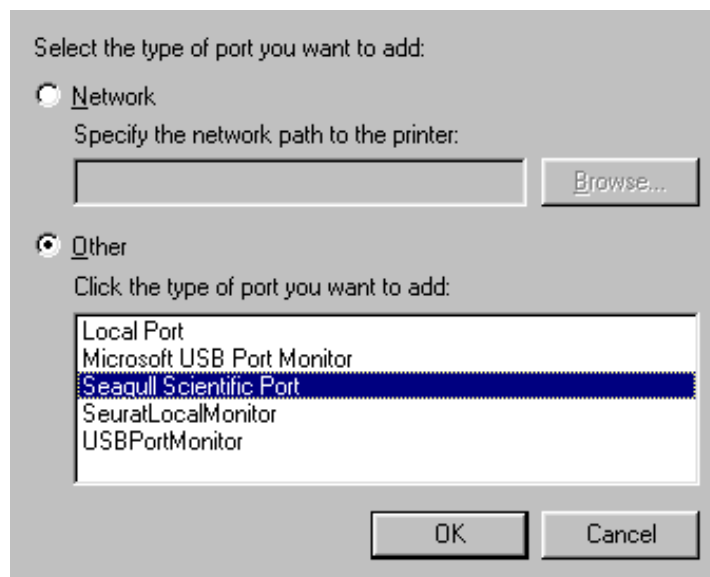


Fig 16

- 2.5 The port wizard will prompt the user for the printer's IP address, port number, and port name. Enter the default IP address 192.168.188.85 unless you have reconfigured the printer's IP address, in which case you should enter the new IP address. The port number should have defaulted to 9100. You may enter a new port name or accept the default name that is created from the IP address that was entered. Click ok to continue.

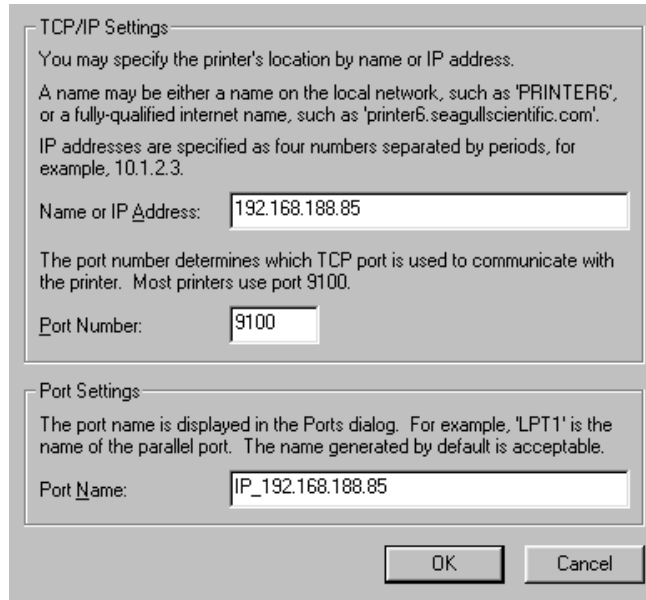


Fig 17

- 2.6 The port wizard closes and the user is returned to the VP2020 properties/details window. The port that the user created is now shown in the window entitled "print to the following port." Click apply, and select the general tab.

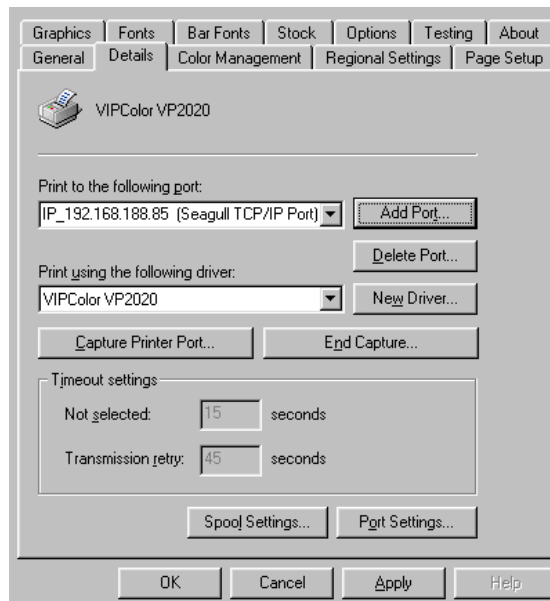


Fig 18

2.7 In the VP2020 properties/general page, click print test page.

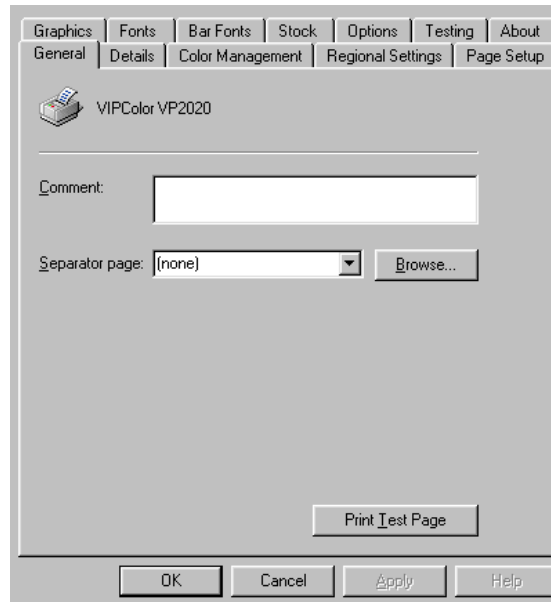
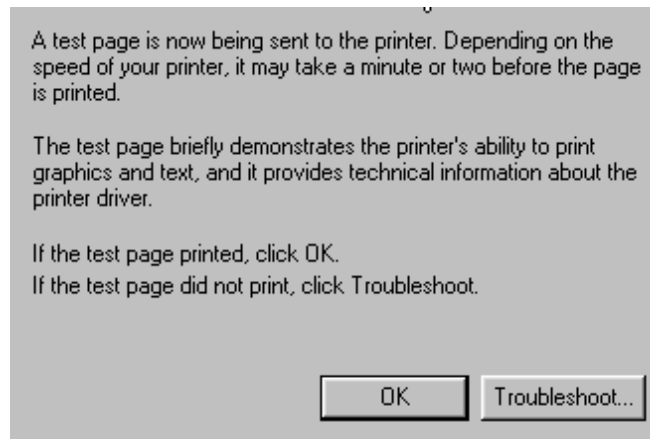


Fig 19

2.8 The test page will be a label that has the word "TEST" printed on it. Click ok to continue.



2.9 The Installation process is complete