

Driver Installation Procedure for Win 2000

VP2020

CONTENTS

This document gives the directions for installing the VIPColor VP2020 Driver in Windows 2000

1. Installing the VIPColor VP2020 driver from the installation CD.

- 1.1 Insert the VIPColor UltraLite CD by Seagull Scientific into the cd-rom drive on your Computer. The Bar Tender Set-up Manager Window will appear on your screen automatically. Select Seagull Printer Drivers.

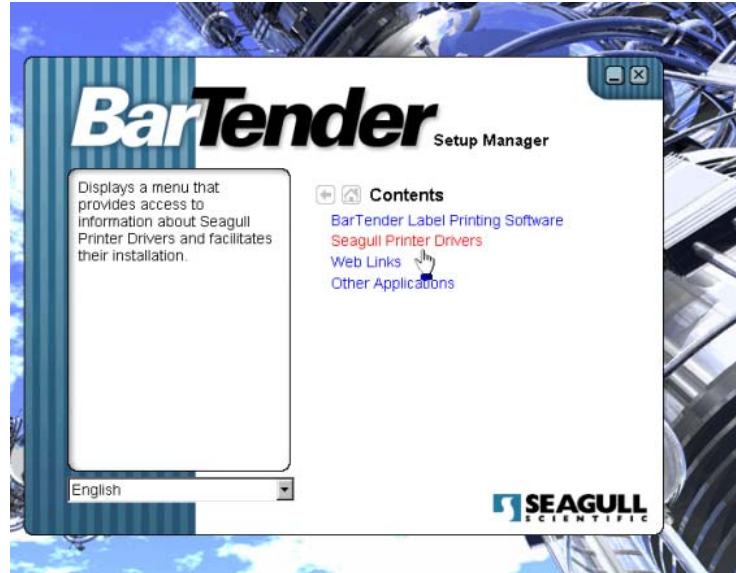


Fig 1

- 1.2 In the Seagull Printer Drivers field, select the install printer driver option from under the software installation menu. This will automatically launch the add printer wizard.

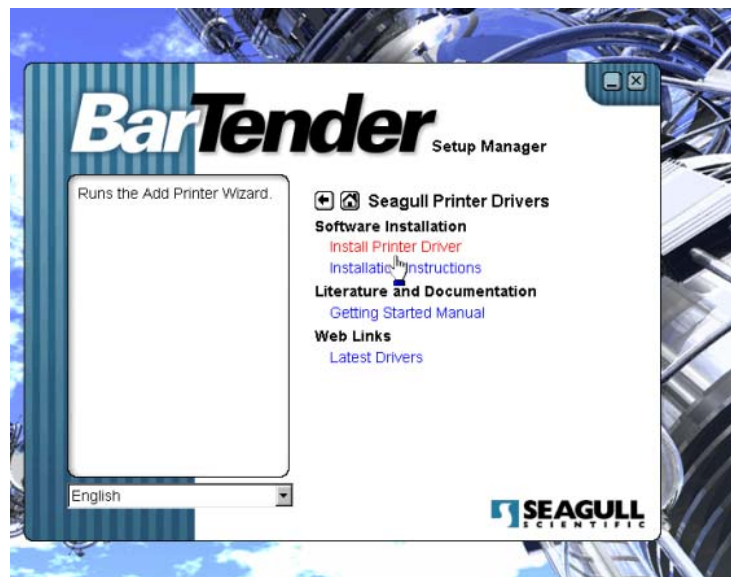


Fig2

1.3 In the add printer wizard window, click next to continue.

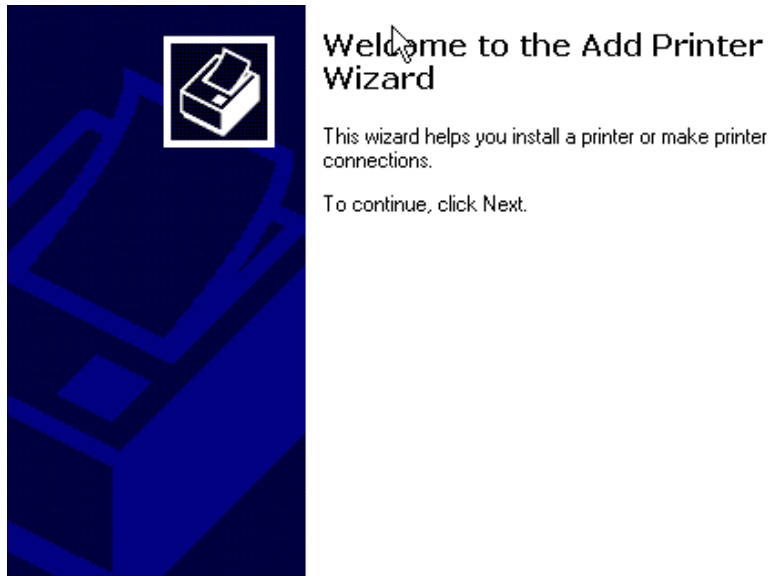


Fig3

1.4 Select the local printer option, and de-select the option to automatically detect and install a plug and play printer. Click next to continue.

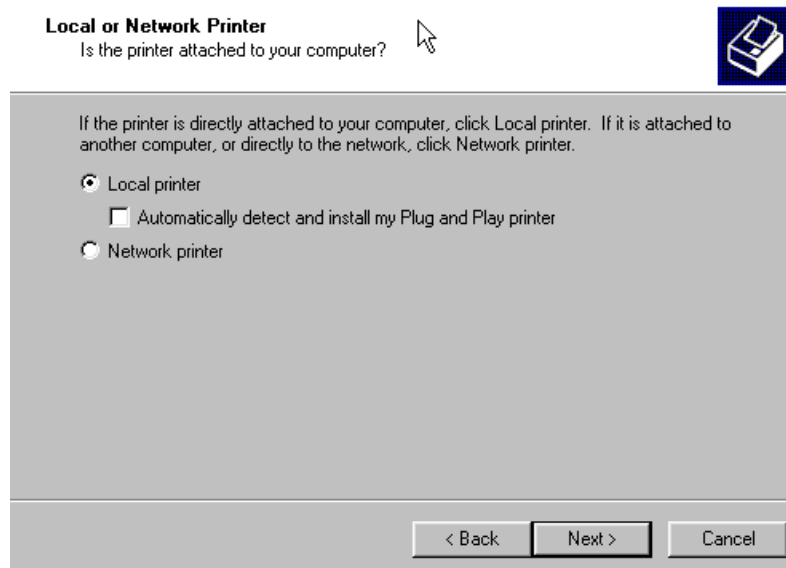


Fig 4

- 1.5 Select "Create a new port" and then choose "Standard TCP/IP Port" from the available port types in the drop down menu. Click next to continue.

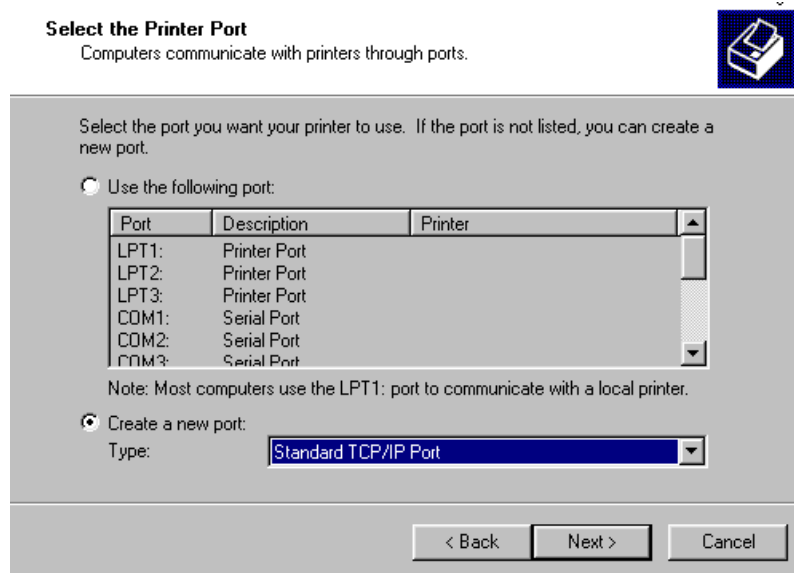


Fig 5

- 1.6 The add Standard TCP/IP printer port wizard will launch. Click next to continue.

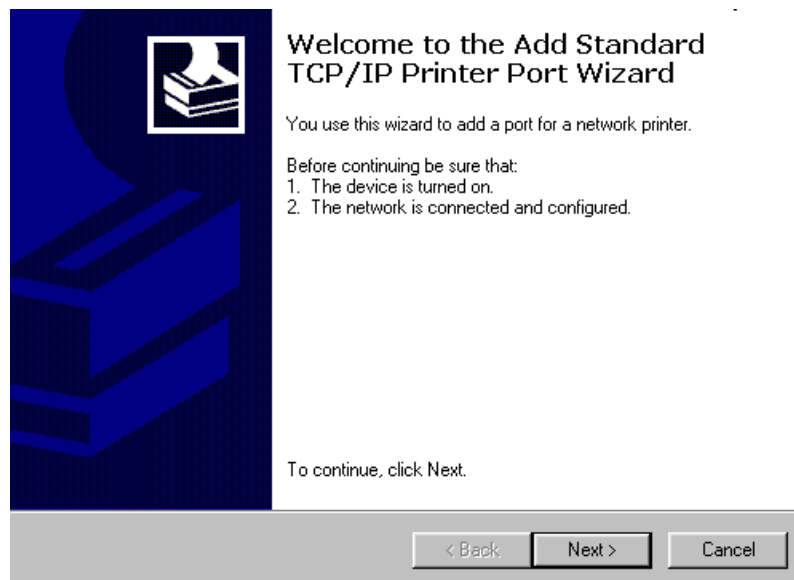
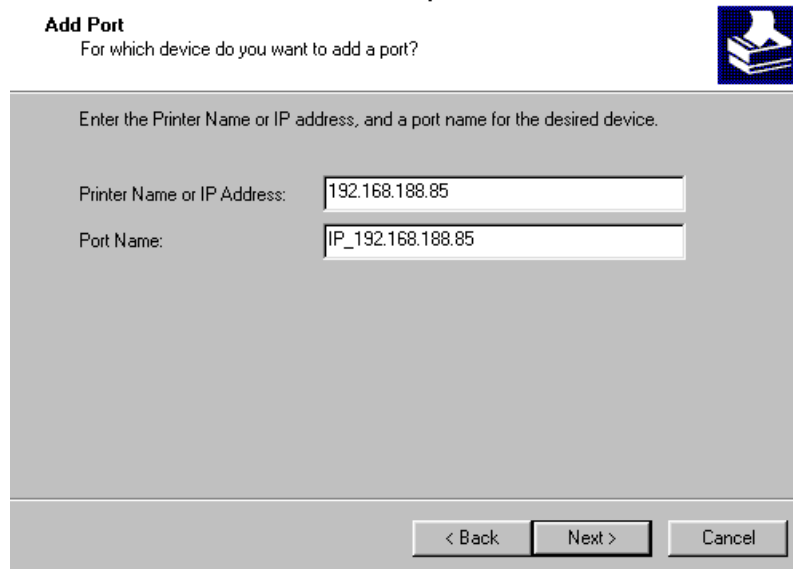


Fig 6

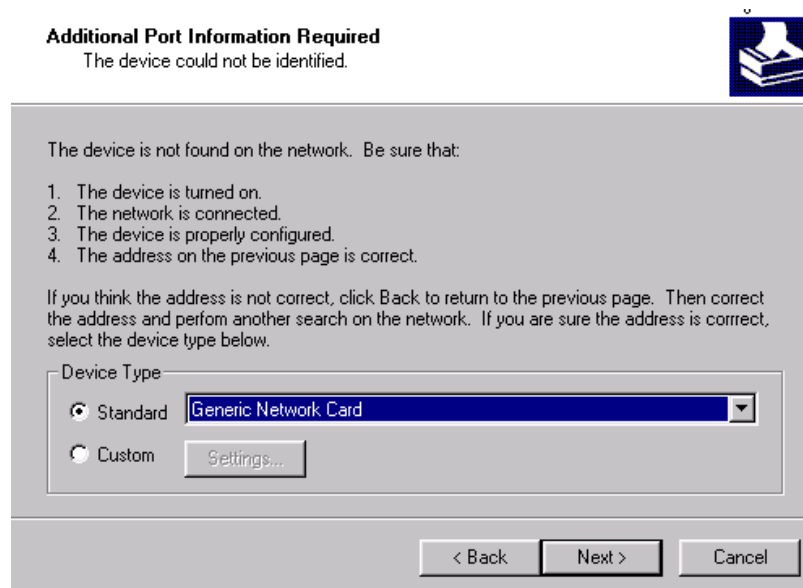
- 1.7 The port wizard will prompt you for the printer IP Address and Port Name. Enter the printer's default IP address - 192.168.188.85. The port name will be automatically entered. Click next to continue.



The screenshot shows a dialog box titled "Add Port" with a printer icon in the top right corner. Below the title is the question "For which device do you want to add a port?". The main area contains the instruction "Enter the Printer Name or IP address, and a port name for the desired device." There are two input fields: "Printer Name or IP Address:" with the value "192.168.188.85" and "Port Name:" with the value "IP_192.168.188.85". At the bottom, there are three buttons: "< Back", "Next >", and "Cancel".

Fig 7

- 1.8 The printer port wizard will then prompt you for the type of device. Select "standard" and choose generic network card from the drop down menu. Click next to continue.



The screenshot shows a dialog box titled "Additional Port Information Required" with a printer icon in the top right corner. Below the title is the message "The device could not be identified." The main area contains the text "The device is not found on the network. Be sure that:" followed by a numbered list: "1. The device is turned on.", "2. The network is connected.", "3. The device is properly configured.", and "4. The address on the previous page is correct." Below this is a paragraph: "If you think the address is not correct, click Back to return to the previous page. Then correct the address and perform another search on the network. If you are sure the address is correct, select the device type below." There is a "Device Type" section with two radio buttons: "Standard" (selected) and "Custom". The "Standard" option has a dropdown menu showing "Generic Network Card". A "Settings..." button is next to the "Custom" option. At the bottom, there are three buttons: "< Back", "Next >", and "Cancel".

Fig 8

- 1.9 The Printer port wizard displays the settings for the TCP/IP port that you created. Click finish to continue.

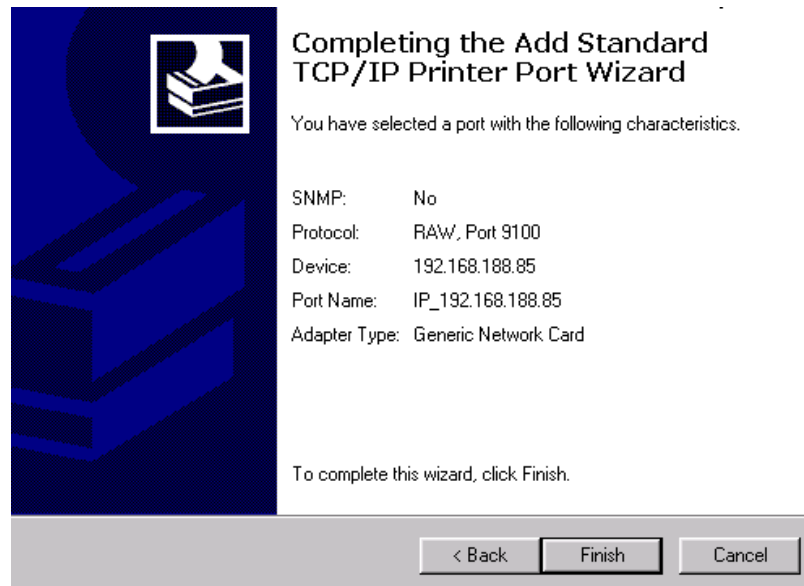


Fig 9

- 1.10 The add printer wizard then prompts you for the manufacturer and model number of the printer that will be installed. Click have disk.

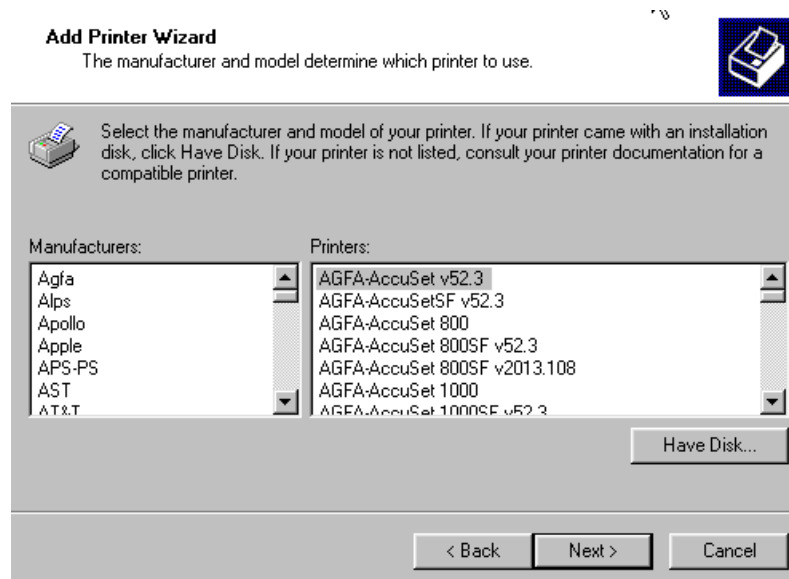


Fig 10

- 1.11 The printer wizard will then prompt you to enter the location where the printer driver files are located. Select the appropriate root drive on your computer that corresponds to the location where the VIPColor UltraLite by Seagull Scientific CD is located. Then select the VIPColor file and click open.

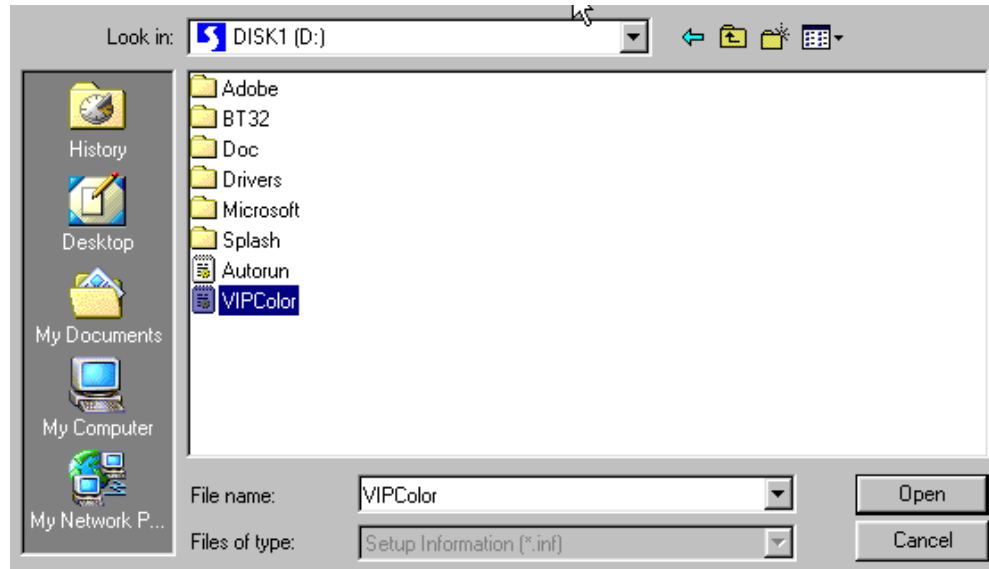


Fig 11

- 1.12 The Location where the files will be copied from is displayed. Click ok to continue.

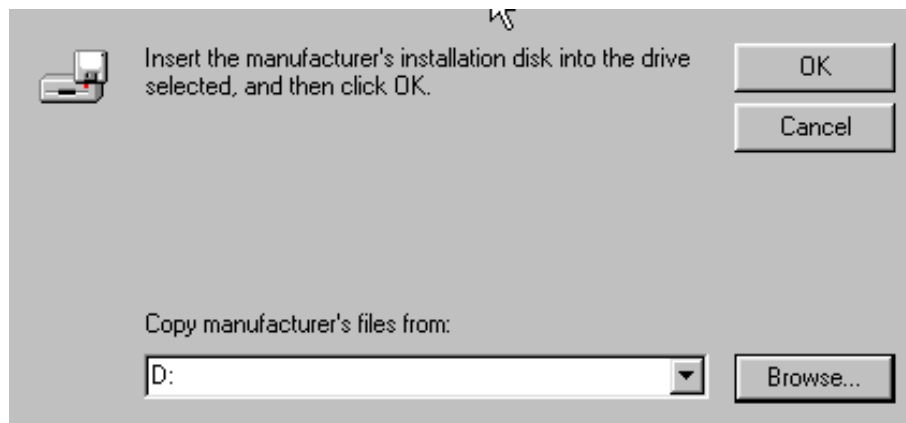


Fig 12

- 1.13 In the Add printer wizard window, the VIPColor VP2020 appears under the printer's caption. Click next to continue.



Fig 13

- 1.14 You will then be asked whether or not you would like to keep the existing driver. Select replace existing driver, and click next to continue.



Fig 14

- 1.15 The User will be prompted to enter the printer's name. This should have defaulted to VIPColor VP2020. The operator must then decide whether or not to setup the VIPColor VP2020 printer as their default printer. Click next to continue.

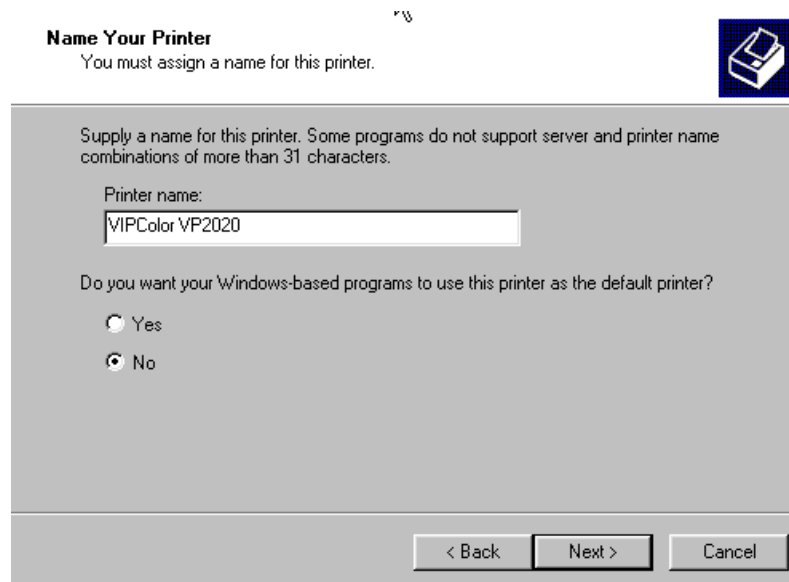


Fig 15

- 1.16 The user will then be asked whether or not they would like to share this printer with other users. Select do not share this printer. Click next to continue.

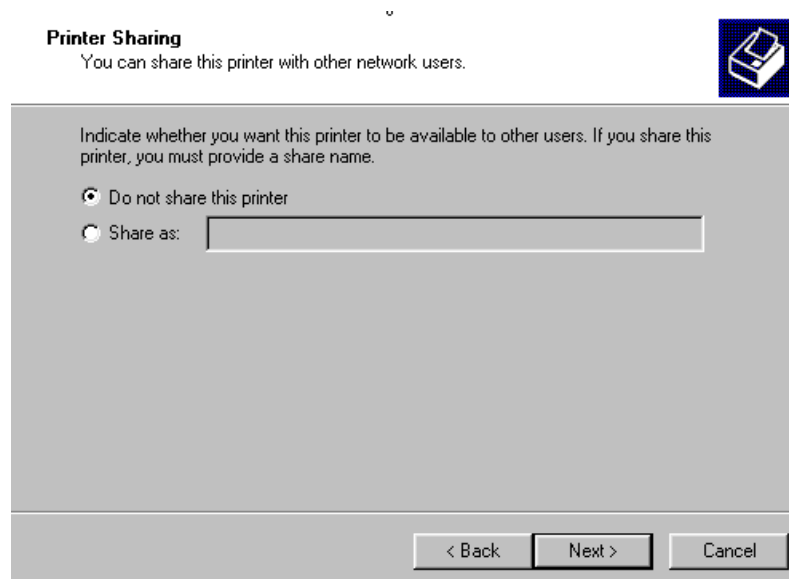


Fig 16

- 1.17 The user will then be asked whether or not they would like to make a test print. Select the no and click next to continue.

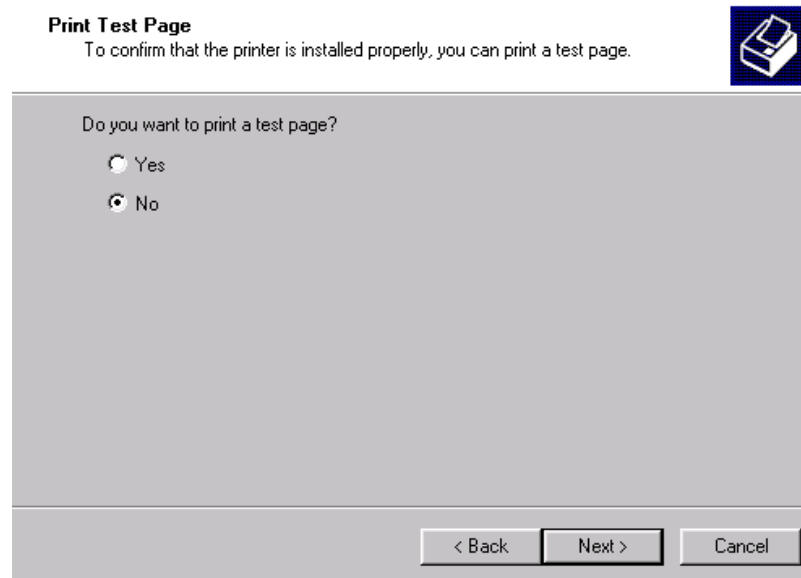


Fig 17

- 1.18 The printer wizard is now complete. In the window, you will see all of the selections that have been made for the VP2020 driver that will be added to your computer. Click finish.

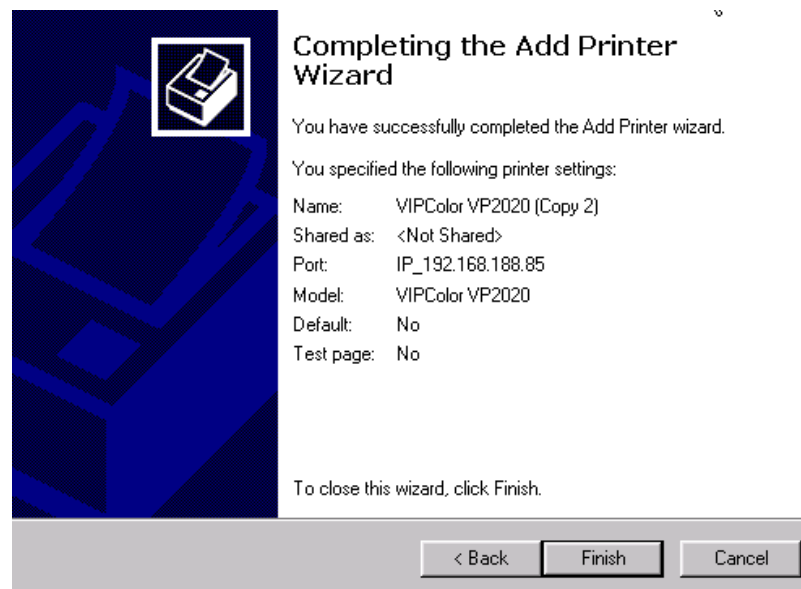


Fig 18

- 1.19 The next screen is informing you of the fact that our driver has not been registered with Microsoft. However, it is fully functional with the Windows operating system. Click yes to continue.



Fig 19

- 1.20 The program will begin loading the driver files to your computer. When that is completed the printer wizard program closes and you are returned to the Bartender Setup Manager Screen. Close the screen by clicking the "X" icon in the top right hand corner. The VP2020 is now successfully loaded as an available printer on your computer. The VP2020 driver installation process is complete.